

6 Grasswren Rise, South Morang, Vic 3752



House For Sale

Thursday, 4 April 2024

6 Grasswren Rise, South Morang, Vic 3752

Bedrooms: 4

Bathrooms: 2

Parkings: 2

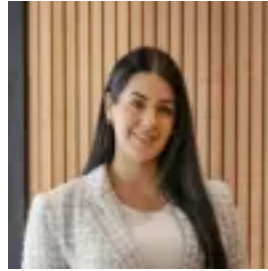
Area: 476 m2

Type: House



Tony Ong

0391111707



Ashlee Jade

0397175372

Auction...Saturday 4th May at 1:00pm

Generously proportioned, sparkling in presentation and faultless in its location. Located within walking distance to Marymede College, Middle Gorge Train Station. Close proximity to Westfield Shopping Centre, Coles Shopping Complex, reputable schools, gorgeous parklands and much more. Beautifully balanced to enhance indoor-outdoor living, this immaculate home offers 4 spacious bedrooms, master bedroom serviced by ensuite and walk in robe. Modern kitchen complimented by premium appliances, an entertainer's island stone bench plus abundance of storage space adjoining with open plan meals and family area plus extra living area at rear. Journey outside to an all-seasons alfresco inviting effortless entertaining with family & friends and spacious backyard for extra activities. Quality features include ducted heating, split systems, alarm system, roller shutters through out, dishwasher, NBN and remote double garage with internal access. Whether you're seeking for a family home or an investment opportunity, this excellent address will suit your property needs.