

6 Grevillea Crescent, Hornsby Heights, NSW 2077



Sold House

Friday, 27 October 2023

6 Grevillea Crescent, Hornsby Heights, NSW 2077

Bedrooms: 3

Bathrooms: 2

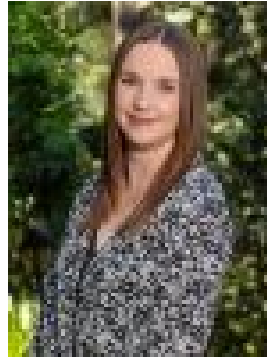
Parkings: 3

Area: 748 m2

Type: House



Sally Dodd



Amelia Dodd
0466911334

\$1,626,000

Offered to the market for the very first time, this remarkably spacious family home with character filled interiors enjoys tranquil privacy and serene bushland outlooks. Revealing a versatile floorplan with potential 4th bedroom/self contained accommodation this lovely home is positioned in a prime location for an ultra convenient lifestyle. It is within footsteps to the local shops and Hornsby buses and walking distance to Hornsby Heights public school, Hornsby, Rofe Park and bushwalks. Expansive floorplan offers versatility for growing families. Private frontage with gated access and landscaped gardens. Spacious, well appointed kitchen with sunlit casual dining. Vast open plan living and dining, seamless flow to family room captures views with floor to ceiling windows. Parents retreat with bush vistas, balcony, WIR and ensuite. Two spacious bedrooms on entry level include lofts. Main bathroom has shower plus separate luxury spa room. Home office plus study space, ideal for working from home. Lounge with bar or potential self contained accommodation. Vaulted ceilings, air conditioning, timber and slate flooring. Double lockup garage plus carport for additional parking.