

**6 Insley Way, Caroline Springs, Vic 3023**



**House For Sale**

Saturday, 6 April 2024

6 Insley Way, Caroline Springs, Vic 3023

**Bedrooms: 4**

**Bathrooms: 2**

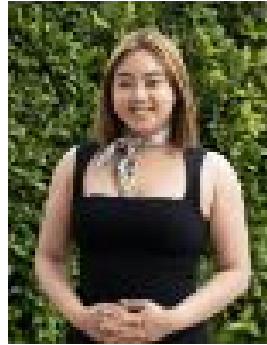
**Parkings: 3**

**Area: 776 m2**

**Type: House**



George Skizas  
0393909002



Teresa Nguyen  
0393909002

**\$900,000-\$950,000**

On-site Auction, Saturday the 11th of May at 1pm AUCTION BIDDING BY REGISTRATION ONLY! Please contact George Skizas on 0401 203 869 to register your interest. Introducing 6 Insley Way, Caroline Springs, a stunning Porter Davis built family home nestled on a generous 774m<sup>2</sup> block in the sought-after locale of Caroline Springs. This impressive residence boasts a versatile floor plan and an array of desirable features, making it the perfect choice for families seeking space, style, and comfort. Upon entering, you are greeted by a light-filled foyer that sets the tone for the rest of the home. The accommodation comprises four spacious bedrooms, each equipped with built-in robes for ample storage. The master bedroom is a sanctuary of relaxation, boasting a luxurious ensuite, as well as a walk-in robe for added convenience. The home also offers the flexibility of a dedicated home office, providing the perfect space for those who work remotely or require a quiet study area. Multiple living areas cater to every need, including a formal lounge room for sophisticated entertaining, and a cozy rumpus room or home theatre, ideal for movie nights with family and friends. Central to the home is the chef's kitchen, which is sure to impress even the most discerning culinary enthusiasts. Featuring a walk-in pantry, stone benchtops, and quality stainless steel appliances, including a gas cooktop and dishwasher, this kitchen is as functional as it is stylish. The kitchen overlooks the spacious open-plan meals and family area, creating a seamless flow of living space. For added convenience, a fourth living zone provides the perfect kids retreat, offering privacy and space away from the main living areas. Outdoors, the entertainment options continue with a large undercover alfresco area, perfect for hosting gatherings or simply enjoying the peaceful surroundings. Overlooking manicured gardens and tranquil wetlands, the outdoor space is truly an entertainer's dream. The triple car garage with drive-through access provides ample parking and additional storage options, perfect for those with boats, trailers, or extra vehicles. Located in a family-friendly neighborhood close to schools, parks, shops, and public transport, 6 Insley Way offers the ultimate lifestyle of comfort and convenience.