

6 Jasmine Road, Gregory Hills, NSW 2557



House For Rent

Tuesday, 14 May 2024

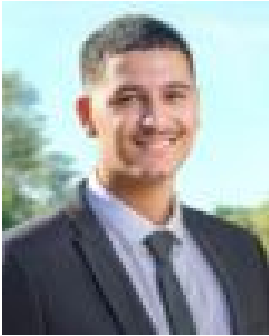
6 Jasmine Road, Gregory Hills, NSW 2557

Bedrooms: 4

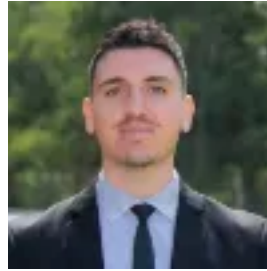
Bathrooms: 2

Parkings: 1

Type: House



Ali Awick
0298913333



Adriano Tassone
0298913333

\$730 per week

PLEASE REGISTER YOUR INTEREST USING THE BOOK INSPECTION LINK TO ENSURE YOU DO NOT MISS OUT ON THE UPDATES FOR THIS PROPERTY. THOSE NOT REGISTERED MAY MISS OUT ON A VIEWING OPPORTUNITY

THANK YOU This brand-new home seamlessly blends sleek architecture with luxurious modern living, presenting an unmissable opportunity. Boasting expansive living spaces and a seamless open-plan layout flooded with natural light, this property offers a lifestyle of comfort and sophistication. Nestled in a quiet yet convenient corner of Gregory Hills, this residence enjoys proximity to essential amenities such as the Gregory Hills Town Centre, local parks, public transportation, and schools. Key features of this property include:

- **Master Suite:** A spacious master bedroom featuring a Built-in wardrobe and ensuite bathroom.
- **Bedrooms:** All other bedrooms are generously sized and equipped with built-in robes (BIR).
- **Kitchen:** The kitchen showcases elegant granite benchtops, quality appliances including gas cooking, and a stainless-steel dishwasher.
- **Design Elements:** High ceilings throughout the home create an airy atmosphere, while ceramic tiles adorn the entry, foyer, kitchen, dining, and lounge areas. Fashionable tiles grace the bathrooms and ensuite, while plush carpeting adds comfort to the remaining areas (excluding wet zones).
- **Entertainment:** An outdoor area that provides the perfect space for indoor-outdoor entertaining.
- **Comfort:** Enjoy year-round comfort with split system air conditioning installed to the lounge room and main Bedroom.
- **Convenience:** A single garage with internal access ensures convenience and security for vehicle storage.

In summary, this meticulously designed home offers a blend of style, comfort, and convenience, making it an ideal choice for modern living. Ray White Parramatta Group - Parramatta | Oatlands | Northmead | Greystanes, its directors, employees & related entities believe that the information contained herein is gathered from sources we deem to be reliable. However, no representation or warranties of any nature whatsoever are given, intended or implied. Any interested parties should rely on their own inquiries.