

6 June Court, Bayswater, Vic 3153

House For Sale

Friday, 19 April 2024

6 June Court, Bayswater, Vic 3153

Bedrooms: 3

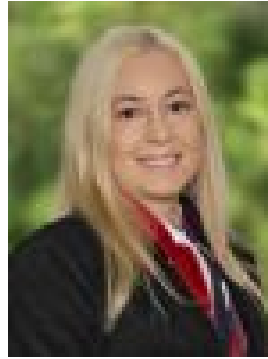
Bathrooms: 1

Parkings: 2

Type: House



Jody Yuan
0416266646



Katherine Olsen
0430461303

AUCTION

A prime court location sets the stage for this recently updated brick residence, conveniently situated near several local primary schools, Wantirna College, Studfield Shopping Centre, and the renowned Westfield Knox shopping and entertainment precinct. Freshly painted, the interior welcomes you with an open foyer leading to a formal front lounge boasting air-conditioning, space heating, and flexible space ideal for a dining area or study nook. The modernized kitchen features stainless steel electric appliances including a double oven, dishwasher, and range hood, complemented by ample cupboard and bench space, a convenient corner pantry, and a matching splashback. Adjacent to the kitchen, a versatile second living or family room offers split system air-conditioning and heating, catering to various lifestyle needs. The accommodation wing comprises three bedrooms, each equipped with built-in robes. Outside, a generous yard awaits, complete with a covered entertaining deck featuring a fan and direct bathroom access, perfect for alfresco dining and gatherings. Additional highlights include a garden shed, a vegetable patch, and a double lock-up garage accessible via a single front carport with secure gates. Benefiting from the new Bayswater Station and level crossing removal, plus easy access to major roads like Boronia and Stud, as well as Mountain and Burwood highways and Eastlink, this property offers both comfort and convenience. Key features:

- Generous block in a sought-after court location
- Quality kitchen with stainless steel appliances, corner pantry, and breakfast bar
- Bedrooms with built-in robes
- Multiple living areas, equipped with heating and cooling throughout
- Main bathroom with shower, vanity, and separate toilet
- New floorboards throughout the living area
- Expansive backyard featuring covered entertaining, garden shed, vegetable patch, and a double lock-up garage accessible via a front carport with secure gates.