

6 Loch Crescent, Strathmore, Vic 3041



Townhouse For Rent

Friday, 3 May 2024

6 Loch Crescent, Strathmore, Vic 3041

Bedrooms: 3

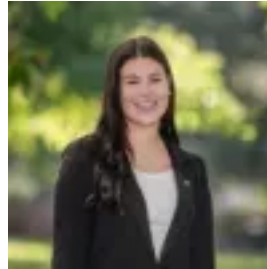
Bathrooms: 2

Parkings: 1

Type: Townhouse



Xavier Sukra
0393792000



Veronica Valenzuela
0393792000

\$710 per week

An exclusive cul-de-sac location walking distance to schools, shops and public transport finds this outstanding home delivering the ultimate in high-quality, low-maintenance living. Bathed in northerly light, the home's stunning interior comprises three bedrooms, a large upstairs master with walk-in robe, balcony and private ensuite, superb main bathroom and additional powder room (third WC). Gourmet kitchen with 2-pac cabinetry and all-Miele appliances complements the spacious open-plan living/dining area with stacker doors revealing a private rear courtyard. Other luxuries include stone benchtops and vanities, ducted heating/refrigerated cooling, double glazed windows, alarm and video intercom, ducted vacuum, LED lighting throughout, plus a single remote garage with internal entry and additional off-street parking space. A sought-after Strathmore neighbourhood (zoned to Strathmore Secondary College), it's also walking distance to Napier Street Village and Strathmore Primary School, local parks, recreational clubs, easy access to the CBD and beyond via Citylink. NB: As this property may be located in an area where car parking is at a premium, please make your own enquiries with the municipal council to determine if a resident parking permit is required for on street car parking.