

6 Maple Street, Trafalgar, VIC, 3824

UNLOCK

Sold House

Friday, 12 May 2023

6 Maple Street, Trafalgar, VIC, 3824

Bedrooms: 4

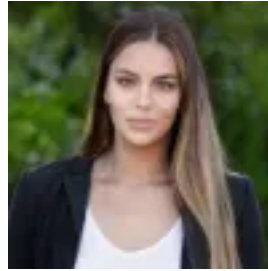
Bathrooms: 2

Parkings: 4

Type: House



Rachael Woodham
0356551531



Natascha Verkaik
0356551531

Beautiful Family Home in the ideal location

Positioned perfectly opposite the Brindlewood play park and walking distance to multiple schools including Trafalgar Primary School, St Joseph's, Trafalgar High School and the Kindergarten, this freshly painted home with new carpets throughout is the perfect home for a growing family.

4 bedrooms or 3 with a study, the Master includes a walk-in robe, ensuite and ceiling fan, bedrooms 2, 3 and 4 all with built in robes. The open plan living & dining area is filled with an abundance of light with full length windows featuring new blinds throughout and glass sliding doors looking out to the back yard.

The spacious kitchen includes loads of bench space, stainless steel gas cooktop, electric oven, dishwasher and pantry with a second living area or formal dining just down the hall.

Double garage, concreted side access for caravan, trailer or boat parking, plus a huge lined and insulated rear shed (6m x 9m) with kitchenette and bathroom which could be used as a man cave, home office, studio or teenage accommodation. Wood shed at the back of the shed all framed in by landscaped gardens, raised veggie patch and a super cute fully lined cubby house!

Undercover outdoor entertaining area showcases a built-in pizza oven, tucked away from the elements between the home and the back shed which is an entertainer's delight with room for extra family to stay if the BBQs & pizza parties get a bit merry!

Features include ducted heating and split system cooling, downlights, ceiling fans, large double lock up garage with internal access to the home, water tank, ample storage, wood shed and side access with double gates at right the side of the home offering parking for your cars, boat, caravan & trailers. Trafalgar's iconic lifestyle elements are all at your fingertips with parks, cafes, restaurants, shopping & quality school within walking distance, easy access to the highway and close by buses and trains.