

**6 Mash Road, Tarneit, Vic 3029**

**Residential Land For Sale**

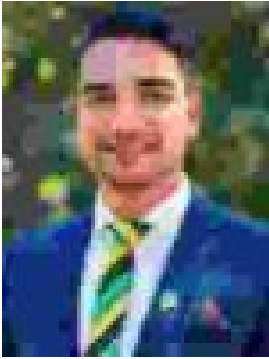
Wednesday, 29 November 2023



6 Mash Road, Tarneit, Vic 3029

Area: 400 m2

Type: Residential Land



Vishu Mandhan  
0409828285

## Contact Vishu 0459 889 603

Reliance Real Estate, Tarneit proudly presents an impressive 12.5 M wide frontage, 32 M depth, this premium block of land is the perfect opportunity to build your dream home. This block will be positioned conveniently across the road from Coles and Tarneit Shopping Centre! Situated within close proximity to the Heartlands club, schools and parklands. Only moments from major shopping centers, renowned primary and secondary schools, childcare and community facilities. The Tarneit train station is only 3km from you and the freeway makes the commute to Melbourne CBD an effortless one. Located very close to the future Tarneit west train station, Riverdale shopping center which will have Coles and other local shops KFC and McDonald's. When it's time to relax, you have kilometers of walking trails and bike paths surrounded by naturally landscaped parkland and wetlands, which feature fitness stations and a playground for children's activities, the perfect place to spend time with your family.\* Close to town center\* 35 minute drive to Melbourne CBD\* 35 minute drive to city of Geelong\* Werribee Pacific Plaza and Mercy hospital are just under 10 minute drive • Only 31km from Melbourne's CBD. • 31 minutes by train from Tarneit Station to Southern Cross Station. • Already a vibrant community. • With plans for even more amenities, parks and wetlands. If you are looking for a place to build your dream home, this land in Tarneit is an excellent choice. With its large size, prime location, and the benefits of the New Heaven Estate, this property offers an excellent opportunity for those looking to invest in their future. Don't miss out on the chance to make this beautiful piece of land your own. For more information, please contact Vishu on 0459 889 603 Please see the link below for an up-to-date copy of the Due Diligence Check List:

<http://www.consumer.vic.gov.au/duediligencechecklist>DISCLAIMER: All stated dimensions are approximate only.

Particulars given are for general information only and do not constitute any representation on the part of the vendor or agent.