

**6 Melissa Place, Deception Bay, Qld 4508**



**House For Sale**

Wednesday, 24 April 2024

6 Melissa Place, Deception Bay, Qld 4508

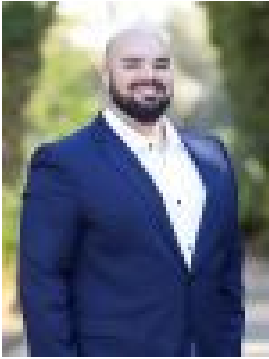
**Bedrooms: 4**

**Bathrooms: 2**

**Parkings: 4**

**Area: 798 m2**

**Type: House**



Julian Clifton

0468566138

## Auction

Welcome to 6 Melissa Place Deception Bay. Centrally located in the prestigious North Ridge Estate which has circa 150 homes and is predominantly owner occupied. Surrounded by Koala Reserve, the estate is the epitome of tranquillity with multiple walking paths and parks and a multitude of wildlife. Situated on a 798m<sup>2</sup> block within a few minutes to local shops, under 10 minutes to Westfield North Lakes shopping precinct and less than 8 minutes from the Deception Bay waterfront plus easy access to the Bruce Highway to head CBD, Gold Coast or Sunshine Coast. The open-plan kitchen features quality appliances including a gas stove, walk-in pantry, an abundance of bench space, breakfast bar and sky light which overlooks the open-plan living and alfresco area. With space and quality in mind the master bedroom is extremely generous in size coupled with a walk-in wardrobe, the ability to dual hang and plenty of storage. The high end ensuite finishes of the area which exudes opulence and space. Access is also available to the alfresco area from the master. All the remaining bedrooms are spacious in size and either a walk-in wardrobe or built-ins with fans. The main bathroom features a walk-in shower and tasteful bath to complement the Hamptons style throughout. The well thought out media room features black out curtains, a split system air-conditioner which will make the ultimate movie experience from your very own home. The laundry has plenty of bench and cupboard space to make washing a breeze and easy access straight to the clothesline. Featuring a spacious open-plan decked alfresco area surrounded by tranquil greenery and lush Sir Walter grass plus the added benefit of a more private relaxation area in the back, with a fire pit for the cooler months to sit and relax and enjoy some drinks with friends and family. A 6m x 6m powered shed with drive through access will give you an extra 2 car spaces or plenty of room to store the tools or toys. With also, another space large enough to house a caravan or large boat. KEY Features:- Ring security system- 9ft ceilings throughout- Google Smart Home- Koolbrick insulation- Security screens- Tinted windows- 6m x 6m powered shed with drive through access- 6.5kw solar system- Chrome tapware & door handles throughout This property is a one of kind in the estate and area. Don't miss your opportunity to secure one of the most luxurious properties. (option to purchase furniture can be facilitated in the contract). NOTE: This property is being sold without a price and therefore a price guide cannot be provided. The website may have filtered the property into a price bracket for website functionality purposes. Information contained on any marketing material, website or other portal should not be relied upon and you should make your own enquiries and seek your own independent advice with respect to any property advertised or the information about the property.