

6 Nandina Court, Leanyer, NT 0812

Sold House

Tuesday, 26 September 2023

6 Nandina Court, Leanyer, NT 0812

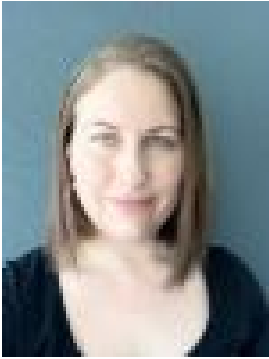
Bedrooms: 3

Bathrooms: 1

Parkings: 2

Area: 807 m2

Type: House



Nuriye Piening
0429826650

\$430,000

Discover your dream abode at 6 Nandina Court, Leanyer – a splendid three-bedroom, elevated house, perfect for first-home buyers and renovators looking to craft their ideal living space. This charming property boasts an array of fantastic features, including floor boards, fans and air-conditioners throughout, ensuring a comfortable and refreshing atmosphere year-round. Enjoy the convenience of a functional kitchen with a servery window, as well as louvre windows designed to capture the soothing evening breeze. Additionally, the property offers an entertaining area under the house, a store room and two convenient parking spaces. The fully fenced yard provides privacy and security, and with a neat yard, a touch of personal flair will create an enviable outdoor sanctuary. While the interior may benefit from a fresh coat of paint, this home presents boundless potential for those ready to make their mark. Conveniently located, 6 Nandina Court is a mere five minutes from the bustling Casuarina Shopping Centre, seven minutes from the Royal Darwin Hospital, and surrounded by an array of excellent primary and secondary schools. Don't miss this exceptional opportunity to create your perfect home in the heart of Leanyer. Act now, and start planning your new life at 6 Nandina Court. Features: * Three bedrooms with built in robes * Open plan lounge, dine and kitchen * Fans and aircons throughout * Louvre windows and floorboards * Store room * Functional kitchen Close By: * Less than a km from Good Shepherd Lutheran College, Leanyer Campus * 3 minutes from Hibiscus Shopping Centre * 5 minutes from Casuarina Shopping Centre * 7 minutes from Royal Darwin Hospital * 20 minutes from Darwin City House Built: 1982, 98m² Easement: As per title a Drainage Easement which runs along the left boundary and is 1.91m wide. Electrical Easement located at the front right hand boundary and is about 2m x 3.55m