

6 Opulence Place, Roxburgh Park, Vic 3064



House For Sale

Thursday, 4 April 2024

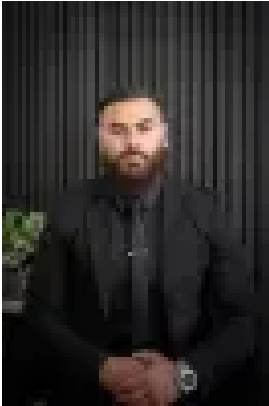
6 Opulence Place, Roxburgh Park, Vic 3064

Bedrooms: 4

Bathrooms: 2

Parkings: 2

Type: House



Jack Esho

0422777504

Contact Maple!

Presented to you is an amazing opportunity to secure this meticulously crafted, family-friendly home in a prime location. Upon arrival, you'll be welcomed by a contemporary-style appeal offering a glimpse of the blissful living experience awaiting you inside. Situated in one of the most sought after pocket of Roxburgh Park "Arena Estate" A beautifully appointed residence, poised for family living and year-round entertaining, it offers a wonderful sense of space and privacy that will surely impress. This quality home showcases elegant entry, luxury two living areas, Stylish master walk-in robe and deluxe double sink ensuite and additional large three bedrooms. Enjoy the convenience of a well-appointed central bathroom & separate powder room to accommodate guests. Welcome to your dream kitchen! This spacious and well-organized kitchen has lots of storage space in the walk-in pantry. It's equipped with top-quality appliances and plenty of counter space, making cooking easy. The stylish cabinets and sleek countertops add a nice touch too. Get ready to enjoy cooking in this amazing kitchen. Step into your enclosed alfresco retreat – perfect for lounging and entertaining! This versatile space features a cozy lounge area ideal for relaxing with loved ones. Plus, with a convenient kitchen setup, it's perfect for outdoor dining and hosting gatherings. Enjoy the best of outdoor living in this inviting alfresco haven. This house is equipped with 12 solar panels, generating a total of 6.5 kW of electricity. With this solar setup, it can significantly reduce its dependence on traditional power sources, potentially leading to lower energy bills and a smaller carbon footprint. This house boasts double glazed windows throughout, providing enhanced insulation and noise reduction. Enjoy increased energy efficiency, reduced utility costs, and a quieter, more comfortable living environment. Last but not least, low maintenance lawn. Concrete pathways all around the house and a well-planned and sophisticated landscape are definitely an eye-catcher. Within the sought-after "Arena Estate", it's a short walk from Parks and playgrounds along with the bus stops. Moments from local shops, cafés, and convenience store. For more information please Contact Jack Esho on 0422 777 504