

# 6 Parnell Street, Strathfield, NSW 2135

## Sold House

Friday, 8 September 2023



6 Parnell Street, Strathfield, NSW 2135

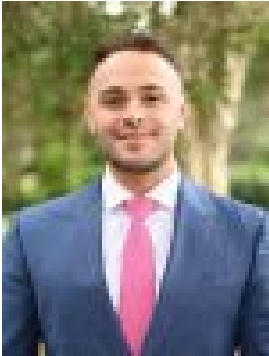
Bedrooms: 5

Bathrooms: 1

Parkings: 2

Area: 404 m2

Type: House



Elie Semrani  
0452353735



Adrian Jian-Sheng Wu  
0297632277

**\$4,000,000**

Looking for a prime commercial real estate investment opportunity? Look no further than this auction listing for a unique property in the highly sought-after location of Strathfield. Boasting approximately 404sqm of land and zoning for B4 Mixed Use, this property offers incredible potential for expansion and development (STCA). Situated between two major train stations, Strathfield and Burwood, this property offers unparalleled convenience and accessibility for tenants or customers. With a floor space ratio of 3:1 and a building height limit of 30 metres, the possibilities for this property are only limited by your own imagination. The land dimensions of this property are equally impressive, with a frontage of 20.44m and a back of 15.25m. The left side measures 33.26m, while the right side measures 20.00m. Don't let this opportunity to expand your investment portfolio pass you by. For a copy of the Pre-Development Application Plans please contact the exclusive selling agent.