

6 Platypus Circuit, Rochedale, Qld 4123

House For Sale

Thursday, 4 April 2024



6 Platypus Circuit, Rochedale, Qld 4123

Bedrooms: 6

Bathrooms: 3

Parkings: 4

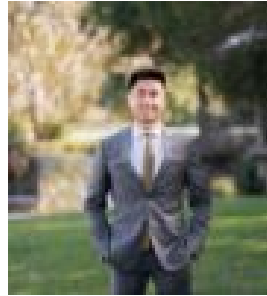
Area: 539 m2

Type: House



Mike Ho

0433529221



Leo Zhan

0423574280

SUBMIT OFFERS! Mansfield SHS Catchment

Nestled within the prestigious Rochedale Estates and enveloped by the highly sought-after Mansfield State High catchment, welcome to 6 Platypus Circuit. This expansive family residence sprawls across a 539m² allotment, nestled within a serene enclave offering exclusive access to the Rochedale Lifestyle Centre-boasting amenities such as a pool, gym, tennis courts, and chic cafes. Crafted with precision by Metricon Homes, this residence epitomizes meticulous design, showcasing a spacious layout accentuated by soaring ceilings. Constructed with Besser block from top to bottom, enhanced by feature cladding at the front and rear, and reinforced by a steel frame, the home exudes unparalleled structural integrity. Upon entry, a grand hallway sets the stage, leading to a generously-sized spare bedroom complete with a walk-in wardrobe and shared ensuite-ideal for accommodating extended family or facilitating dual living arrangements. Further along, a versatile living area, adorned with cavity slider doors, offers multifunctional potential, perhaps serving as a sixth bedroom. Continuing through the hallway, a spacious living area seamlessly transitions into the open dining and exquisite kitchen space. The kitchen, a culinary sanctuary, boasts a vast island stone bench, ample storage, and deluxe appliances including a 5-burner natural gas cooktop and oven. Adjacent, a butler's pantry provides additional storage and a sink, catering to seamless entertaining. The adjacent laundry, with external access, enhances convenience. Outside, the fully concreted backyard plays host to an extended patio adorned with custom swinging chairs, complemented by a built-in kitchenette featuring a BBQ and sink-perfect for hosting elegant gatherings. The property is equipped with comprehensive video surveillance for added security. Upstairs, three generously-sized bedrooms, each with built-in wardrobes, share a bathroom and separate toilet. A leisure area separates these rooms from the master suite-an opulent retreat boasting a luxurious ensuite and an oversized walk-in wardrobe with bespoke cabinetry. Key Features: * Positioned within the prestigious Mansfield State High catchment, with close proximity to Rochedale Primary School and Redeemer Lutheran College. * 24-hour security surveillance throughout the estate. * Access to premium amenities including a 25-meter lap pool, tennis courts, gym, and private theater. * Impressive kitchen space boasting a substantial island bench, abundant cabinetry, and a butler's pantry. * Ducted vacuum system with a brand-new setup. * Master suite with ensuite and custom walk-in wardrobe. * Additional features include a media room, leisure room, and expansive outdoor entertainment area. * Low-maintenance backyard with a stylishly concreted surface. * Ample storage throughout the residence. * Conveniently located within walking distance to chic cafes, medical facilities, and other premium amenities. * Short drive to Coles supermarket and effortless access to Brisbane CBD, airport, and Gold Coast. Please note, the information provided herein is for promotional purposes only. Prospective buyers are encouraged to conduct their own due diligence and seek independent advice regarding the property."