

6 Russell Avenue, Westleigh, NSW 2120



House For Rent

Friday, 17 May 2024

6 Russell Avenue, Westleigh, NSW 2120

Bedrooms: 4

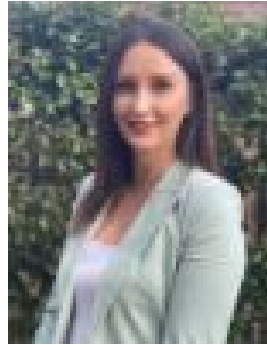
Bathrooms: 2

Parkings: 2

Type: House



Jennifer Biscan  
0417019772



Laura Yates  
0466064722

**\$900 pw**

Nestled amidst serene bushland is this 4 bedroom private home. Features include:- 4 bedrooms with built in robes- Open plan kitchen with ample storage- Spacious lounge room opens out onto entertaining balcony- Air conditioning- Main bedroom with ensuite- Internal laundry- Single Lock up garage with internal access- A split-level backyard, providing various areas for outdoor activities and relaxation. Located close to many parks and playgrounds, this home is a family sanctuary in a quiet location. \*Public Transport options available to Westleigh Shopping Village, Pennant Hills Train Station, Pennant Hills High School & Hornsby Loop Services\*