

**6 Russell Street East, Rosewater, SA 5013**



**House For Sale**

Tuesday, 23 January 2024

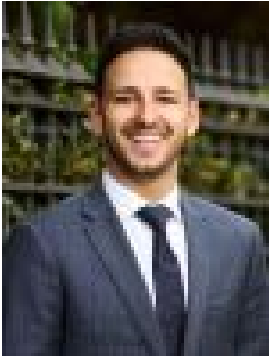
6 Russell Street East, Rosewater, SA 5013

**Bedrooms: 3**

**Bathrooms: 2**

**Parkings: 1**

**Type: House**



Stefan Siciliano  
0403171489



Adam Humzy  
0488586552

**\$590,000 - \$620,000**

In the hidden gem that is Rosewater, a modern 3-bedroom residence blends convenience with contemporary allure, a stone's throw from the historic charm of Port Adelaide. Enveloped by quality homes and infused with the aromas from nearby cafes, this offering in Adelaide's Western enclave is a treasure waiting to be claimed. The facade of the home presents a single car garage and a complementary carport, ensuring ample vehicle accommodation. Inside, the master bedroom greets occupants with the sophisticated touch of plantation shutters. Its somewhat modest walk-in robe, creative in design, leads you to an ensuite featuring a shower, toilet and vanity, it's set apart by double glazed windows for added security and climate control. A seamless expanse of floating floors welcomes continuity throughout the home, leading to the second and third bedrooms, while the central main bathroom offers functionality to residence, featuring a bath, toilet, shower and vanity. The heart of the home, the kitchen, boasts a 600mm Westinghouse cooktop and oven beside a reliable Bosch dishwasher. This open plan space is shared with an expansive living room and dining area; a unified setting for relaxation and entertainment. Double sliding doors invite you to a pitched pergola, overlooking a fully paved backyard that whispers low maintenance, accentuated with tasteful landscaping along the back fence. This Rosewater residence is a canvas of opportunity, a chance to cultivate a home amidst a hidden pocket of Adelaide's vibrant West.

**Additional Features:**

- Private laundry with overhead cupboards and sink, also provides outdoor access
- Store room/linen cupboard offers additional storage
- Ducted heating and cooling are the home's silent comforters, ensuring a temperate environment all year round
- Provisions for stool seating at the kitchen bench
- Close proximity to Alberton train station for easy access to Adelaide CBD
- Nearby schools include: Mount Carmel College, Pennington Junior Primary School, Pennington Primary School, Alberton Primary School, St Joseph's School, Woodville High School, The Grove Education Centre, Portside Christian College, Seaton High School

**Disclaimer:** As much as we aimed to have all details represented within this advertisement be true and correct, it is the buyer/purchaser's responsibility to complete the correct due diligence while viewing and purchasing the property throughout the active campaign. Ray White Prospect is taking preventive measures for the health and safety of its clients and buyers entering any one of our properties. Please note that social distancing will be required at this open inspection.