

6 Salomon Court, Beenleigh, Qld 4207



Sold House

Wednesday, 3 January 2024

6 Salomon Court, Beenleigh, Qld 4207

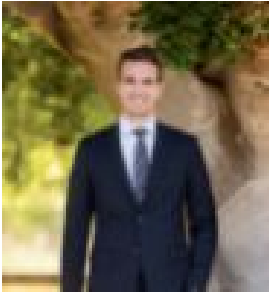
Bedrooms: 3

Bathrooms: 1

Parkings: 1

Area: 689 m2

Type: House



PAUL PENKLIS
0738076334



KALEB LIVINGSTONE
0738076334

\$530,000

Introducing 6 Salomon Court, Beenleigh to the market. This property offers stunning features & provides a generous return. Currently tenanted: 10/01/2024 at current rent of \$440 pw. Secluded in a quiet cul-de-sac just off Harburg drive this Home features 3 bedrooms 1 Bath and sits on a 689m² Block. Well presented and offering a spacious feel this home doesn't lack size. Walk through to the kitchen and dining area where you will find a well-equipped kitchen with generous storage and bench space positioned for easy entertaining and family mealtimes. The dining room allows for an effortless flow to the outdoor patio where you will spend countless hours relaxing and admiring the peace and tranquillity of the leafy surroundings. Property Features:· 3 Generous Sized Bedrooms· Security Screens throughout· Modern Flooring· Patio/Alfresco Area· 689m² Block Beenleigh is located midway between Brisbane and the Gold Coast and offers easy access to M1, Logan Motorway and Express trains to CBD. Schools and Shops are within minutes drive from the front door. Inspections are a must! Make sure you call to find out more. Give Paul Penklis a call on 0450 549 393 to avoid missing out on this great property. Disclaimer: All information contained herewith, including but not limited to the general property description, price and address, is provided to Ray White Beenleigh by third parties. We have obtained this information from sources we believe to be reliable; however, we cannot guarantee its accuracy. The information contained herewith should not be relied upon and you should make your own enquiries and seek advice in respect of this property or any property on this website.