

6 Sonata Close, Port Douglas, Qld 4877



House For Sale

Thursday, 13 June 2024

6 Sonata Close, Port Douglas, Qld 4877

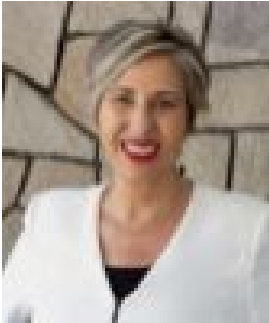
Bedrooms: 3

Bathrooms: 2

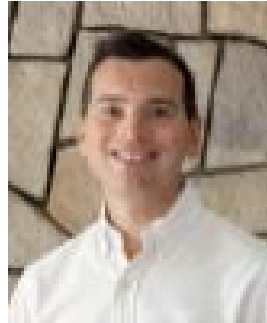
Parkings: 2

Area: 825 m2

Type: House



Soula Kazakis
0740982507



Lee Tartaglia
0499043311

Offers Over \$1,550,000

Just a 200-metre walk to Four Mile Beach in the highly sought-after "Solander" area of Port Douglas, this contemporary residential home boasts approximately 238 square metres under roof on a generous 825 square metre parcel of land, enhanced by a delightful rainforest backdrop. The open plan layout seamlessly combines the essence of a luxurious retreat with the practicality of everyday living, creating the ideal Port Douglas beach home. A high vaulted ceiling in the main living pavilion ensures the whole space is filled with natural light. An abundance of louvres and windows facilitate cross-flow ventilation while providing vistas and a connection to the outdoors from every location within the home. The generously sized entertainer's kitchen is well appointed and accommodates the busyness of social gatherings while allowing the chef to prep and participate in conversations. The expansive awning window in the kitchen opens effortlessly, creating a harmonious transition between your benchtop and servery. A built in bbq and kitchenette allow for easy entertaining in the undercover alfresco area adjacent to the sparkling pool. The spacious primary bedroom with well designed walk in robe and generous ensuite enjoys a calming rainforest aspect. An undercover patio at the back of the home offers another space to relax and unwind overlooking an expansive lawn area while you appreciate the sights, sounds, and serenity of the lush green rainforest. Practicality has not been overlooked, the rear of the property can be directly accessed from the double lock up garage and there is a 5mt x 3mt (approx) additional shed providing storage options. 6 Sonata Close is a step into the epitome of Port Douglas living. Every detail has been thoughtfully crafted to offer you effortless comfort and harmonise with its stunning surroundings. This residence is more than just a place to live-it's your gateway to the relaxing Port Douglas lifestyle that awaits. For more information or to arrange a private inspection please contact Soula Kazakis on 0422 966 573 or Lee Tartaglia on 0499 043 311. At a glance:

- 200m walk to Four Mile Beach
- Spacious open floor plan
- Multiple outdoor alfresco areas
- Entertainer's kitchen
- Light filled interiors with superior appointments throughout
- Rainforest backdrop
- Move in ready