

6 Therese Court, Alice River, Qld 4817

Residential Land For Sale

Friday, 5 April 2024

McDONOUGH
PROPERTY

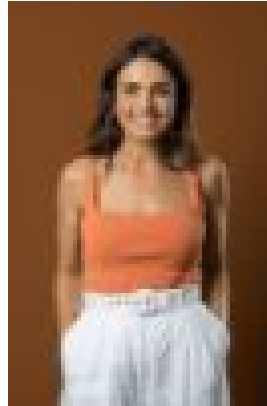
6 Therese Court, Alice River, Qld 4817

Area: 4505 m2

Type: Residential Land



Martin McDonough



Monique Petersen
0450955736

Low to Mid \$400,000's

Introducing, 6 Therese Court, nestled in the serene suburb of Alice River. This exceptional 4505 sqm block of land boasts not one, but two sheds, offering an array of potential uses. A serene location with picturesque surroundings, this property is a dream come true for those seeking space, flexibility, and opportunity. Set on an expansive 4505 sqm block of land, this gem features not one, but two sheds, each contributing to its charm and potential. As you step onto the grounds, you'll immediately sense the boundless possibilities awaiting you. The first shed (15m x 7m), a testament to practicality, serves as a haven for storage, providing ample space to house tools, equipment, and belongings. But it's the second shed (15m x 6m) that truly sets this property apart. Ingeniously repurposed into a comfortable living space, it boasts two cozy bedrooms, ideal for accommodating guests, extended family, or anything else you could think of. Step inside, and you'll discover a modern bathroom, complete with all the amenities needed for convenience and comfort. Adjacent, a fully equipped kitchen beckons, offering the perfect setting to unleash your culinary creativity or simply enjoy a morning cup of coffee while admiring the tranquil surroundings. With additional features such as three phase power, solar and a home sewerage treatment plan. Whether you envision expanding the living quarters, cultivating a thriving garden oasis, or pursuing entrepreneurial ventures, the possibilities are as limitless as your imagination. With ample space for outdoor activities and further development, this property invites you to write the next chapter of its story. Don't miss this rare opportunity to own a piece of paradise with the added benefit of versatile sheds ready to fulfill your dreams. Features:

- Conveniently situated in the peaceful suburb of Alice River, this property offers a tranquil retreat amidst picturesque surroundings.
- This exceptional block of land boasts not one, but two sheds, offering an array of potential uses.
- The first shed, a testament to practicality, provides ample storage space for tools and belongings.
- Ingeniously repurposed second shed that truly sets this property apart, boasting two cozy bedrooms, a modern bathroom, and a fully equipped kitchen.
- Secure fencing all around the block with an electric front entry gate.
- Three phase power.
- Solar.
- Home sewerage treatment plan (HSTP).
- Set on an expansive 4505 sqm block of land.