

6 Tianari Drive, Honeywood, Tas 7017

RIPPLE

Sold House

Saturday, 16 December 2023

6 Tianari Drive, Honeywood, Tas 7017

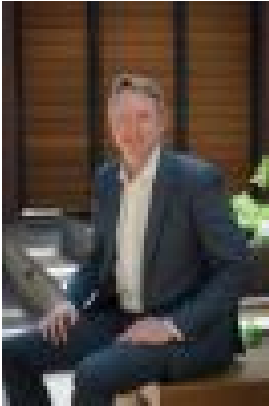
Bedrooms: 4

Bathrooms: 2

Parkings: 6

Area: 1 m2

Type: House



Warwick Page
0362280895

\$870,000

Discover the perfect blend of convenience and tranquil country living in this private corner of peaceful Honeywood. Nestled on approximately 3 acres of rolling fields with idyllic rural views, this expansive four-bedroom property offers an abundance of space - both indoors and out - all within easy reach of Hobart's CBD. The rambling approach up the long tree-lined drive, double front doors, and magnificent foyer all create a grand entrance. Plus, the home's solid brick, tile, and slab construction ensures durability and long-lasting appeal. Inside, you'll find three spacious living areas, including a superb living and dining room with a lovely leafy outlook as the heart of the home. There's a cosy wood fire and reverse cycle air conditioning for year-round comfort and relaxed family living. A highlight for its generous proportions, the kitchen features timber cabinetry, ample storage and an island bench - making this a functional and accessible space. A second family room with high ceilings and electric heating provides access to the covered outdoor entertaining area, an ideal spot for hosting memorable gatherings, casual family dining, or unwinding to the soothing sounds of nature. There's also a separate rumpus room that offers additional versatility and privacy away from the main living areas and is adjacent to a large bedroom and toilet facilities. It has fantastic potential as a teenager's retreat, guest accommodation, or just what you need to fit a large family. The remaining sleeping quarters consist of two bedrooms with built-in wardrobes and a third master bedroom with walk-in storage and an ensuite, and there's a generously sized family bathroom with corner spa bath. As well as a single garage with internal access, there is an enormous triple garage with a workshop and storage space that tradies or hobbyists will love - with plenty of room for tools, vehicles, and all your recreational equipment. Bring your dreams of a hobby farm, or of freedom and fresh air - there's space for animals, extensive gardens and for kids to play and explore - all only a short 25-minute commute to central Hobart. Bridgewater and Brighton, both a short drive away, provide all the shops and services you may need. This remarkable property presents a rare opportunity to embrace a peaceful country lifestyle without compromising on convenience. Don't miss the chance make your rural-living dreams a reality - contact Warwick today to arrange a time to view. We have obtained all information in this document from sources we believe to be reliable; however, we cannot guarantee its accuracy. Prospective purchasers are advised to carry out their own investigations.