

6 Timberview Terrace, Croydon Hills, Vic 3136



Sold House

Thursday, 26 October 2023

6 Timberview Terrace, Croydon Hills, Vic 3136

Bedrooms: 5

Bathrooms: 2

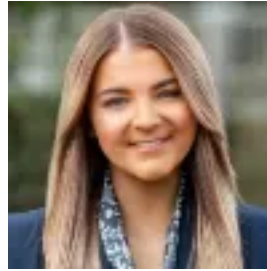
Parkings: 2

Area: 1473 m2

Type: House



Chris Watson
0398798827



Olivia Mackie
0398798827

\$1,425,000

THE PROPERTYTucked away in a leafy cul-de-sac within a lovely neighbourhood pocket, this exceptional five-bedroom home will truly excite families looking for quiet connected living. Ideally positioned on a huge 1473 sq m approx. block backing on to Candlebark Walk Reserve, enjoy a serene lifestyle with everything you need conveniently nearby. Greeted by a classic brick façade and verandah, inside the formal living and dining domain is highlighted by large bay windows that frame lush garden views and draw in natural light. Stepping through to the expansive rumpus room, a grand brick fireplace adds warmth and ambience, while the central kitchen and meals domain offers a third large living space, ideal for growing families. Accommodation is abundant starting with the main flaunting a luxe twin vanity ensuite and walk-in robe, while three other bedrooms include built-in robes. Further adding to the appeal, a spacious study which can accommodate as a fifth bedroom, ducted heating and cooling and a fantastic backyard with patio, deck and plenty of space for the kids to play.**THE FEATURES-** Expansive five-bedroom, two-bathroom home- Bedroom near entry can be used as a study- Master bedroom includes luxe twin vanity ensuite & WIR- Three further bedrooms with BIRs, plus a large study- Chic main bathroom flaunts corner spa bath & powder room- Vast backyard with deck and patio, perfect for entertaining- Double garage & workshop plus secure parking for caravan- Fireplace, plus ducted heating and cooling for absolute comfort **THE LOCATION**Situated in a beautiful leafy location, you can step out your back gate to the walking trails of Candlebark Reserve, with shopping and transport conveniently nearby, plus a host of quality schools in the area including Croydon Hills Primary, Yarra Road Primary, Yarra Valley Grammar and Luther College.