

60 Botanical Circuit, Banora Point, NSW 2486

Sold House

Friday, 1 September 2023



60 Botanical Circuit, Banora Point, NSW 2486

Bedrooms: 4

Bathrooms: 2

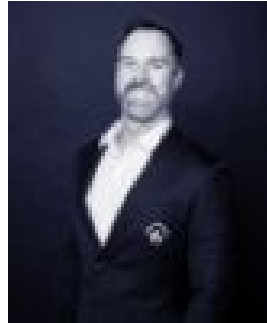
Parkings: 2

Area: 620 m2

Type: House



Tate Brownlee
0755130300



Brad KopcikasYates
0408251988

\$1,060,000

Twenty three years ago as the new and modern Flametree Estate was being sold, a couple had an opportunity to purchase a premium block of land across from a nature reserve for the tidy sum of \$90,000. They decided to build with Perry Builders and it would be the perfect place to call home. The design was brick and tile construction and the position on the block would create side access for a boat, caravan or trailer. The layout consisted of a large and spacious front living space with the garage adjacent and internal access straight to the kitchen. Kitchen area and living was in full view of the undercover outdoor space. All bedrooms were comfortable in size with the master bedroom and ensuite plus walk in robe tucked away at the back of the property to ensure privacy. One of the main features of the design was the pitched ceiling in the main living area. The family have recently updated appliances and the home has two air conditioning units making it well equipped for the summer months. This Flametree Estate is renowned for its easy walking to the local shopping village, and close to local sports clubs, schools and public transport. This original residence in Flametree is available for you to make your mark and claim one of the premium positions before it's too late. * High ceilings* Fully fence yard * Side access for a boat, trailer or camper van * Large grass area * X2 air conditioners * Large outdoor entertainment area * Minutes from Coles Banora Central * Close to local schools and public transport @ Tate Brownlee Real Estate we open the doors to your future! **DISCLAIMER:** We have in preparing this document used our best endeavours to ensure the information contained is true and accurate, but accept no responsibility and disclaim all liability in respect to any errors, omissions, inaccuracies or misstatements contained. Prospective purchasers should make their own enquiries to verify the information contained in this document.** Attention Clients: Due to the current COVID-19 pandemic we are here to ensure the safety and health of our buyers, sellers & tenants. Social distancing will be applied upon any inspections and we will run through a list of questions and rules before entering the home.