

**60 Genevieve Circuit, Cranbourne East, Vic 3977**



**House For Rent**

Monday, 13 May 2024

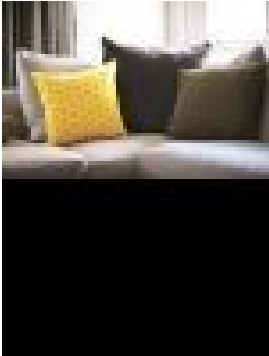
60 Genevieve Circuit, Cranbourne East, Vic 3977

**Bedrooms: 4**

**Bathrooms: 2**

**Parkings: 2**

**Type: House**



Ray White Pakenham Rental Team  
0359408355

**\$570 per week**

\*\* To apply for this property please register your enquiry by clicking on the red "get in touch" button or the apply button

\*\*Nestled in a coveted locale within walking distance of Cranbourne East schools, public transport options, shopping precincts, and Casey sports facilities, this impeccably maintained 4-bedroom residence presents a blend of functionality and style. Boasting a thoughtfully designed floor plan, the property features:- Modern kitchen equipped with sleek 900mm stainless steel appliances, a dishwasher, stone benchtops, and ample storage space, the kitchen exudes contemporary elegance and practicality.-Enjoy year-round comfort with ducted heating and split system cooling, ensuring a pleasant living environment in all seasons.-Offering secure parking for vehicles with the convenience of remote access.- A formal lounge greets visitors upon entry, while the expansive open living area seamlessly flows to the alfresco entertaining zone, ideal for hosting gatherings and enjoying outdoor relaxation.-The property boasts meticulously landscaped gardens, requiring minimal upkeep while enhancing the aesthetic appeal.- Retreat to the master bedroom, complete with an ensuite bathroom and walk-in robe, providing a private sanctuary for relaxation.-Three generously sized bedrooms offer ample accommodation space for family members or guests. Situated amidst multiple shopping centres, Casey Fields football ground, Casey Race Recreation & Aquatic Centre, and Casey Library, residents have easy access to an array of leisure and lifestyle amenities. Families will appreciate the proximity to Cranbourne East Primary and Cranbourne East Secondary College, along with Cranbourne Secondary College, ensuring quality education options for children. Impeccably presented and strategically positioned, this residence offers a desirable lifestyle with its blend of modern convenience and proximity to essential amenities. Experience the epitome of suburban living in this sought-after Cranbourne East locale.