

60 Lakeshore Drive, Helensvale, Qld 4212



House For Sale

Monday, 22 April 2024

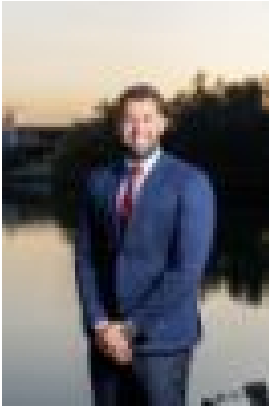
60 Lakeshore Drive, Helensvale, Qld 4212

Bedrooms: 4

Bathrooms: 3

Parkings: 2

Type: House



Ricky Agent
0755922706



ParisBella White
0407223182

Auction

THE OPPORTUNITY Poised on the edge of Helensvale, 60 Lakeshore Drive stands as a testament to refined elegance and timeless sophistication. One look at the expansive 800sq m block and it's clear that this residence is not just a prospective property-it's a masterpiece with 100m view straight down the channel. With its enviable north-facing orientation, 60 Lakeshore epitomises Gold Coast waterfront living. Designed with meticulous attention to detail, every facet of this home speaks to a discerning buyer's palate. From the seamless integration of indoor and outdoor living spaces to having open-water views directly adjacent, tranquility and serenity are omnipresent. Spread across two levels, thoughtfully curated interiors encompass a sitting room, an open-plan kitchen, living, and dining area, all adorned with bespoke finishes and exquisite craftsmanship. The kitchen features state-of-the-art appliances and bespoke cabinetry, while the fluidity of the floorplan allows entertainers to wine and dine, all at the same time. Outside awaits a private oasis unlike any other. The sprawling back patio, framed by manicured lawns and lush greenery, offers the perfect setting for al fresco dining and entertaining guests under the stars. And let's not overlook the allure of Helensvale itself. From its tranquil suburban setting to its vibrant cultural scene, this northern Gold Coast suburb offers a lifestyle that's both refined and enriching. With its proximity to shopping hubs, recreational facilities, and esteemed educational institutions, it's no wonder that Helensvale is considered one of the most desirable locations on the Gold Coast.

WOW FACTORS- Waterfront opulence featuring 4 bedrooms, 3 bathrooms, multiple living spaces, and a 2-car garage- Expansive 800sq m block offering potential for renovation or redevelopment- Prime location on the cusp on Hope Island and Helensvale, areas renowned for their sophistication, exclusivity and convenience- Exceptional waterfront position with north-facing views and direct access to Saltwater Creek- Impeccably maintained property with no body corporate fees- Waterfront view with 100m outlook straight down the channel

Disclaimer: This property is being sold by auction or without a price and therefore a price guide cannot be provided. The website may have filtered the property into a price bracket for website functionality purposes. We have in preparing this information used our best endeavours to ensure that the information contained herein is true and accurate, but accept no responsibility and disclaim all liability in respect of any errors, omissions, inaccuracies or misstatements that may occur. Prospective purchasers should make their own enquiries to verify the information contained herein. * denotes approximate measurements.