

60 Parkway Drive, Mooloolaba, Qld 4557



Sold House

Saturday, 11 November 2023

60 Parkway Drive, Mooloolaba, Qld 4557

Bedrooms: 4

Bathrooms: 2

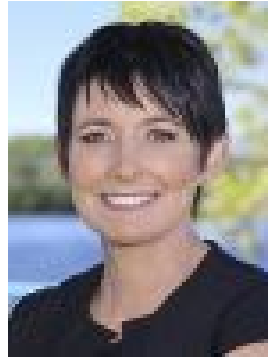
Parkings: 2

Area: 694 m2

Type: House



Hamish Bolderston
0754508000



Trudi Fernandez
0417137374

\$1,650,000

Tucked away in a quiet part of Mooloolaba, surrounded by other well-presented properties and positioned in a highly sought-after pocket, this immaculate home boasts the perfect layout for families or those needing a dedicated home office. Offering the simplicity of a single level design with low maintenance lawns and gardens, a beautiful tiled pool out back plus plenty of covered outdoor entertaining space, the home is close to Beaches, Mountain Creek State High, Mooloolaba Primary School as well as the local park and shops.- Unbeatable location; level 694sqm block; walk to shops/schools- Seamless single-level design; open plan and large eat-in kitchen- Extra gated off-street parking for boat or caravan- Ducted and zoned air-conditioning, fans in all rooms- Huge covered alfresco area overlooking the private heated pool- Five bedrooms with built-ins; master with ensuite and walk-in robe- Louvers open the house up to lovely cooling breezes - Solar system in place to help minimise your bills- Secure parking for two cars, storage shed for bikes and boards- Stunning entry along boardwalk to double entry doors - 15 minutes to Sunshine Coast Airport, hospital and university- Close to your choice of the Sunshine Coasts' best independent schools- Mountain Creek High School and Mooloolaba Primary catchment