

60 Pretty Sally Drive, Wallan, Vic 3756

CHWYLA

Sold House

Saturday, 30 December 2023

60 Pretty Sally Drive, Wallan, Vic 3756

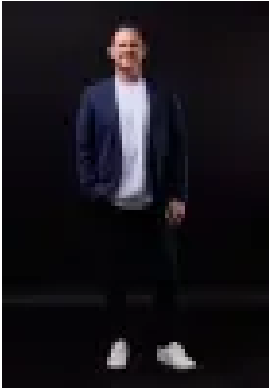
Bedrooms: 4

Bathrooms: 2

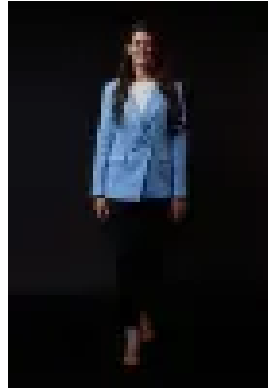
Parkings: 2

Area: 704 m2

Type: House



Paul Chwyla
0386009995



Stacy Richards
0386009995

\$759,000

Make more of : 704m2 block Springridge Estate Four bedrooms Two bathrooms Three living areas Double garage Drive through roller door into backyard parking Additional front yard parking area Feature lighting Downlights Tiled flooring Stone kitchen benchtops with double waterfall 900mm appliances Dishwasher Plumbed fridge space Walk-in pantry Walk-in linen Oversized shower Master with double walk-in robes Three bedrooms with built-in robes Laundry with built-in cabinetry Ducted heating Evaporative cooling Covered alfresco with bar area Extended deck area Fire pit Big backyard with lots of lawn Veggie patch Water tank Two sheds Views of Wallan Creek Park 200m to Springridge Boulevard playground 300m to Berry Saltbush / Springridge bus stop 300m to Grevillia / Pretty Sally bus stop 2.3km to Wellington Square 2.7km to Hadfield Park The initial appeal – A 704m2 block in Springridge Estate, close to everything you need. This is a family home with four bedrooms, three living areas, stone benchtops in the bathrooms and kitchen, and storage that will have you walking in everywhere [double walk-in robes in the master, a walk-in pantry and walk-in linen storage]. The main attraction – If you've got vans, trailers and boats we Pretty much have you covered. There is ample front yard parking, plus a drive through roller door into rear parking. Inside, this home is stunning and spacious. Outside, you'll be all about the covered alfresco with a bar area and fairy lights, extended decking, fire pit, views and big backyard, with lots of lawn and more than enough space to drop in a pool.