

**60 Solar Drive, Whittington, Vic 3219**



**House For Sale**

Thursday, 11 April 2024

60 Solar Drive, Whittington, Vic 3219

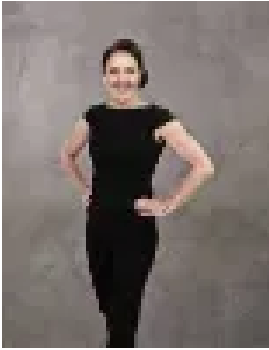
**Bedrooms: 4**

**Bathrooms: 1**

**Parkings: 2**

**Area: 636 m2**

**Type: House**



Michelle Winckle  
0352411488



Marja Le Hunt  
0352411488

**\$580,000 - \$620,000**

This solid brick veneer family home makes the perfect choice for a first home buyer or the savvy investor alike, offering exceptional value at an attractive price point. Comprising a formal lounge with gas wall furnace, kitchen/dining with stainless steel 5 burner gas cooktop and electric oven. Three bedrooms each with built in robes, plus a study which could also be utilised as a 4th bedroom. The central bathroom has a glass panelled shower, full size bath for relaxation and practicality with a separate toilet. Extras such as ducted heating and cooling and alarm system provide modern comforts and ensure safety and security. Outdoors is an undercover entertaining area with a generous rear yard that boasts raised garden beds for those with green thumbs. The driveway provides plenty of off-street parking with a single carport in addition to a 1 1/2 length garage to the rear. Allotment approx. 636sqm. Strategically positioned within walking distance of public transport, Whittington Primary School, Newcomb Secondary College, and Bellarine Highway Shopping. Only a short drive to access the Geelong CBD and Waterfront, this home is a fantastic choice to enter the market now and invest for the future.\*All information about the property has been provided to Hayeswinckle by third parties. Hayeswinckle has not verified the information and does not warrant its accuracy or completeness. Parties should make and rely on their own enquiries in relation to this property.