

601/58 Clarke Street, Southbank, Vic 3006



Apartment For Sale

Monday, 22 January 2024

601/58 Clarke Street, Southbank, Vic 3006

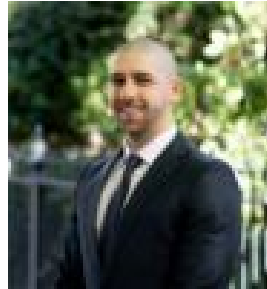
Bedrooms: 2

Bathrooms: 1

Type: Apartment



Austen Kosasih
0422396900



David Umana
0381020200

\$350,000 - \$380,000

- Ample bicycle storage- Immaculate condition- Flexible settlement period- On the fringe of Southbank and South Melbourne- North-East Facing- Oak Flooring and quality appliances/fixtures throughout- NBN Connection Designed by the award winning architects Rothelowman, this immaculately maintained, spacious and light filled 2 bedroom apartment in the Habitat building provides a generous and well thought out space for the busy city professional wanting more. The apartment has oak floorboards in the living areas, quality wool carpets in the bedrooms, floor to ceiling tiling in the bathroom, fully integrated dishwasher/fridge/microwave, upgraded SMEG gas appliances, stone countertops to the kitchen and bathroom, built-in robes to both bedrooms, a cleverly designed computer nook, double glazed windows throughout, a full European laundry, reverse cycle air-conditioning and is connected to the NBN network. The apartment is located around the corner from the multitude of restaurants and cafes on Clarendon Street, the Coles/Woolworths/Aldi located on Market Street, the South Melbourne market and two large chain gyms. For those who enjoy using trams, trams 96/12/109 are all on your doorstep and the apartment is within close proximity to the free tram zone. Residents of the building have access to a rooftop theatre, dining room and BBQ terrace and communal sky gardens located on every third floor of the building. There is ample secure bike storage on the ground floor and a newly opened cafe which caters specifically for residents in the building. This is truly a building designed for living and for those who enjoy the Melbourne lifestyle.