

602/10 Third Avenue, Palm Beach, Qld 4221



Sold Apartment

Saturday, 27 April 2024

602/10 Third Avenue, Palm Beach, Qld 4221

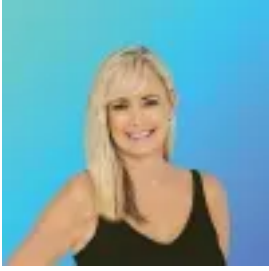
Bedrooms: 3

Bathrooms: 2

Parkings: 2

Area: 149 m2

Type: Apartment



Tracy Tomars

0755930044

\$1,810,000

Location + Lifestyle = Living
With direct beach access less than 90m away, this Palm Beach penthouse jewel is nestled in the acclaimed ACQUA Beachside Residence and showcases uninterrupted views from the picturesque Hinterland to the breathtaking ocean expanse up to Stradbroke Island. Sit back, relax and enjoy subtle sea breezes, views of fireworks on New Years Eve and seasonal migration of whales with their young. Alternatively, drive less than 5km to the world famous surf of Burleigh Heads or Currumbin Beach - on your way stop to enjoy the numerous cafes and restaurants that make this location a popular lifestyle choice for locals. This near new architecturally designed 3 bedroom 2 bathroom beachside apartment has an abundance of natural light and reflects a contemporary coastal aesthetic. Open plan living ensures a seamless transition from kitchen, dining and lounge out to 2 generous outdoor alfresco terraces - 'this is the life'. The largely owner-occupied residents enjoy the landscaped tropical atrium, state-of-the-art fitness centre and a heated infinity pool. The roof-top terrace and herb garden provide the perfect social space where many residents gather to enjoy the expansive ocean views. On weekends, leave the car at home because Dune Cafe, Palm Beach Pirate Park & a designated off leash dog beach are all within walking distance. Safely swim or paddle board minutes away at the local Palm Beach Lagoon or take an easy bike ride to the world famous surf break at Currumbin Alley - local lifestyle choices are numerous;- Local Farmers Markets - Currumbin Cafe Features;- Expansive master suite with ocean views, balcony access, walk-in robe and beautifully appointed ensuite with floor to ceiling tiles and waterfall shower- Generous sized second bedroom with built in robe and balcony access to massive private deck area- Third bedroom with built in robes.- Gourmet kitchen with soft-close cabinetry, SMEG integrated dishwasher, microwave and induction cooktop- Quality engineered timber flooring- Dual lift access, security intercom and camera system and on-site manager- Two secure undercover car parks, side by side - close to the lift- Numerous covered off street parking for visitors - Additional storage and bike racks- Pet friendly
Location: - 1 min walk to bus stops- 2 min walk to to Coles- 7 min drive to Burleigh Heads - 8 min drive to John Flynn Private Hospital- 10 min drive to the Gold Coast Airport- 5 min drive to M1 motorway - north to Brisbane or south to Byron Bay- Zoned for both PBC High and Palm Beach State schools
This property is being sold without a price and therefore a price guide cannot be provided. The website may have filtered the property into a price bracket for website functionality purposes only.
Disclaimer: We have in preparing this information used our best endeavours to ensure that the information contained herein is true and accurate, but accept no responsibility and disclaim all liability in respect of any errors, omissions, inaccuracies or misstatements that may occur. Prospective purchasers should make their own enquiries to verify the information contained herein. * denotes approximate measurements.