

602/25 Lindfield Avenue, Lindfield, NSW 2070

ASSET *realty*

Sold Apartment

Friday, 6 October 2023

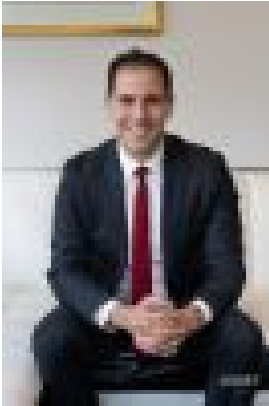
602/25 Lindfield Avenue, Lindfield, NSW 2070

Bedrooms: 2

Bathrooms: 2

Parkings: 1

Type: Apartment



Ari Akbarian
0294987799

\$1,850,000

Located on the Sixth floor with panoramic views over the Sydney Metropolitan area is this two-bedroom unit suited to the high-end dweller. Situated in the heart of Lindfield above Lindfield Shopping Village and adjacent to 'Harris Farm Markets', Lindfield Train Station and Lindfield Village Green, you are spoilt with convenience. Unit 602 is within the exclusive 'The Grove' complex which was architecturally designed by 'Cronin Partners' and developed by 'Aqualand Australia'. The building, location and most importantly the unit will captivate the attention of the most discerning buyer and their guests with it's sleek design, superior finishes and commanding build.

Summary Features:

- Two bed unit on level six with panoramic views and sunny north east aspect.
- 100m from train station, adjacent to cafés/restaurants, Lindfield village green/shopping and 'Harris Farm Markets'.
- Beds are on either side of unit, Master with twin robes and ensuite. Family bathroom with superior fittings, concealed cistern and bath in neutral colours.
- Kitchen with 'Miele' appliances including gas cooktop, oven, dishwasher and microwave under stone benchtop which seconds as a breakfast bar.
- Open plan lounge / dining boasting high ceilings with natural light enhanced through expansive full height windows.
- Storage cupboards, engineered oak flooring, ducted a/c and Internal laundry.
- Secure car space and storage cage located in basement via secure lift access.
- Video Intercom from street level and via Car park entry. Secure Levels.
- Landscaped communal gardens for recreation or entertaining.
- Lindfield Public School and Killara High School catchments. Newington College (Boys), Roseville College and Ravenswood School for girls close by.
- Strata Levies \$1,639.85 pq, Council rates \$357 pq and Water Rates \$173.29 pq

Disclaimer: All information contained herein is gathered from sources we believe reliable. We have no reason to doubt its accuracy. However, we cannot guarantee it. All interested parties should make & rely upon their own enquiries.