

603E/14J Mentmore Avenue, Rosebery, NSW 2018

CENTURY 21. Masterpiece

Apartment For Sale

Friday, 5 April 2024

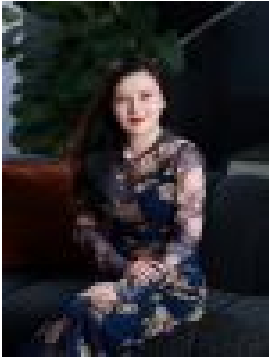
603E/14J Mentmore Avenue, Rosebery, NSW 2018

Bedrooms: 2

Bathrooms: 2

Parkings: 1

Type: Apartment



Cathy Yuan Tian
0294278999

Just Listed!

This stunning two-bedroom apartment is quietly positioned in a highly prized community setting close to universities, transport, shopping center and esteemed local culinary establishments. It occupies a vibrant resort lifestyle, only footsteps to local conveniences in a sought-after position. The apartment offers an abundance of open space with a study, contemporary design and a flowing living and dining area with a large entertaining balcony. Features:- Bright and airy living combined dining area flows on to good size balcony- Two bedrooms both featuring built-in robes plus walk in wardrobe and en-suite to the main- Modern kitchen with meals bench and integrated SMEG appliances- Bathroom with floor to ceiling tiles - Extra study area - Internal laundry with dryer- Ducted air conditioning- Basement car space plus storage What's more:- Bus stop just at the doorstep - Short stroll to Woolworths Metro shops, famous cafés, restaurants, and city transport services- 750m to Gunyama Park Aquatic and Recreation Precinct- 950m to green square train station Property size: Strata area: 118 sqm Floor area: 101 sqm Car spot: 15 sqm Storage cage: 2 sqm Built: 2015 Property outgoings: Strata levy: Approx. \$1,992/quarter Water Rate: Approx. \$185/quarter Council Rate: Approx. \$295/quarter Disclaimer: Photos, images and general property description is provided as a convenience, however, may not represent all aspects of the property advertised. Information contained above should not be relied upon and prospective purchasers should make their own enquiries and seek legal advice in respect of the property.