

604/118 Princess Highway, Arncliffe, NSW 2205



Apartment For Rent

Wednesday, 12 June 2024

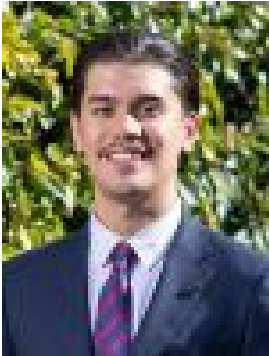
604/118 Princess Highway, Arncliffe, NSW 2205

Bedrooms: 2

Bathrooms: 2

Parkings: 1

Type: Apartment



Jonathon Voisin
0498012853



Tylah Mayor
0406380580

\$850 pw

Experience the ultimate lifestyle at this luxury apartment. Situated in the heart of Arncliffe, it offers bright, contemporary interiors and overlooks the a wide view of Sydney Airport. With state-of-the-art finishes, this apartment epitomises modern living in an ultra-convenient location, with a local shopping village, cafes, eateries, and transport all within easy reach.- Bright, neutral interiors bathed in natural sunlight- Flowing open-plan layout with well-defined living and dining areas- Gourmet stone kitchen with integrated SMEG appliances- Generous-sized bedrooms, both with built-ins; master with a luxurious ensuite- Stylish main bathroom with quality fittings and fixtures- Large, concealed internal laundry fitted with a dryer- One large balcony, double glazed, seamlessly flowing from the living spaces- Air conditioning, newly carpeted, and abundant storage including study nook- One secure car space, allocated storage cage, security intercom and lift access- Walk just 400 metres to trains, shops, and dining in Arncliffe's village centre, or 800 metres to waterfront parklands and cycling trails at Wolli Creek.- Enjoy the convenience of being only a few minutes away from the airport and a short drive to inner-west hotspots.- Pets considered by application