

604/7-9 Churchill Avenue, Strathfield, NSW 2135



Apartment For Sale

Wednesday, 22 May 2024

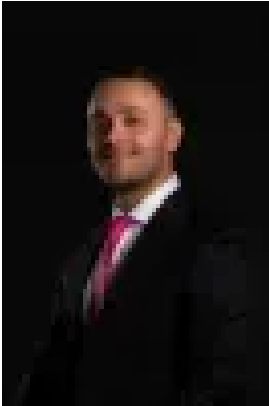
604/7-9 Churchill Avenue, Strathfield, NSW 2135

Bedrooms: 2

Bathrooms: 2

Parkings: 1

Type: Apartment



Elie Semrani
0297632277

Auction

Embrace sophistication and comfort in this fully renovated two-bedroom apartment ideally positioned opposite Strathfield Plaza. Boasting a blend of practicality and luxury, this residence offers a modern living space with tailored interiors and high-end finishes, presenting an exciting opportunity for investors or those seeking a premium lifestyle in a coveted location.

Key Features:

- Elevated on level six in the 'Alrose' complex near Strathfield Station, offering convenience and charm
- Spacious open living and dining area leading to a covered balcony for year-round alfresco dining and entertaining
- Fully renovated gas kitchen with generous cabinetry, tile splashback, and top-of-the-line appliances for culinary enthusiasts
- Two generously sized bedrooms with built-in wardrobes, master suite featuring a walk-in wardrobe and ensuite for added luxury
- Main bathroom and internal laundry facilities included for convenience
- Single lock-up garage with storage cage, security intercom, downlights, ducted and split air conditioning for comfort
- Opposite Strathfield Plaza, close to local shops, eateries, and Strathfield Train Station. Proximity to Strathfield Park and esteemed schools like Strathfield Girls High School, St Patricks High School, and St Martha's Catholic Primary School

Don't miss the chance to secure this stylish two-bedroom apartment offering a blend of modern living and prime location in Strathfield. Experience the best of convenience and comfort in this sought-after locale. Schedule your inspection today!

Disclaimer: We have in preparing this document, used our best endeavours to ensure that all the information contained in this document is true and accurate, but accept no responsibility and disclaim all liability in respect of any errors, omissions, inaccuracies or misstatements contained in this document.