

604A/12 Nancarrow Avenue, Ryde, NSW 2112

Raine&Horne

Sold Apartment

Saturday, 23 September 2023

604A/12 Nancarrow Avenue, Ryde, NSW 2112

Bedrooms: 1

Bathrooms: 1

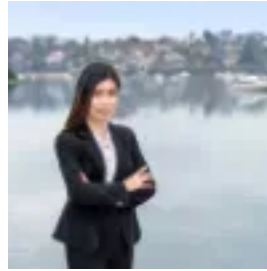
Parkings: 1

Area: 60 m2

Type: Apartment



Kalaney Che
0422273658



Angell Yang
0434259336

Contact agent

Luxurious 1 bedroom apartment located within the exclusive "Pearl of the Bay" has a lot to offer for those seeking lifestyle and convenience. A centrepiece development, the Pearl majestically overlooks the bay. With its bespoke foreshore garden, the Pearl brings new life and energy to this exceptional bay side setting. Ideal for first home buyer and Investment. Feature:- Open plan lounge and dining with access to balcony- Spacious bedroom with built-in wardrobe and access to balcony- Elegant bathroom with frameless shower screen- Modern gourmet designer kitchen with stone benchtop, dishwasher and gas cooktop- Balcony to relax and enjoy the fresh breeze of the bay- Internal laundry with dryer included- Ducted air conditioning- One secure car space- Storage cage- NBN ready- Seamless transit connections: Meadowbank Ferry and Train station. One-stop ferry takes you to world-class attractions at Sydney Olympic Park- Within 3km's you'll find shopping centres: Top Ryde, Rhodes Waterside and DFODon't wait to call our friendly team now for more informationDisclaimer:All information contained herein is gathered from sources we believe to be reliable, we cannot guarantee accuracy. Any interested parties should rely on their own enquiries.