

605/1 Lardelli Drive, Ryde, NSW 2112



Sold Apartment

Friday, 3 November 2023

605/1 Lardelli Drive, Ryde, NSW 2112

Bedrooms: 2

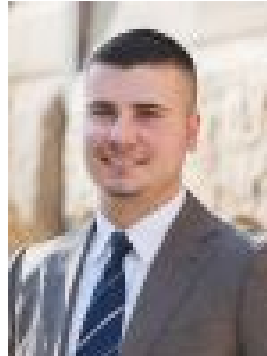
Bathrooms: 2

Parkings: 1

Type: Apartment



Robert Bagala
0298163500



Felix Kerameas
0497006755

Contact agent

A sophisticated residence blending all the exclusive community charm of Putney Hill estate with enviable proximity to city bus & ferry, Top Ryde shopping centre, stunning lakeside parkland and choice of quality schools, vibrant cafes and nearby waterfront foreshores. Flaunting comfort, convenience and guaranteed to impress the fastidious homeowner or astute investor seeking a premium choice in privileged location. - Rooftop entertaining with panoramic views- Facilities include resort like bbq setting, veggie garden and golf putting green- Two generous bedrooms, master with ensuite - Additional custom study space nook- Generous and bright entertainers' balcony - Contemporary kitchen and bathrooms- Impressive interiors throughout - Easy access security car parking- Ample visitor parking and storage cage- Enjoy lake parkland and walking tracks, stroll to Putney Village and cafe precinct- Outstanding proximity to city bus, ferry, Top Ryde and nearby waterfront foreshores