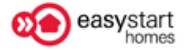


606 Broadmeadows Drive, Hazelmere, WA 6055



House For Sale

Thursday, 9 May 2024

606 Broadmeadows Drive, Hazelmere, WA 6055

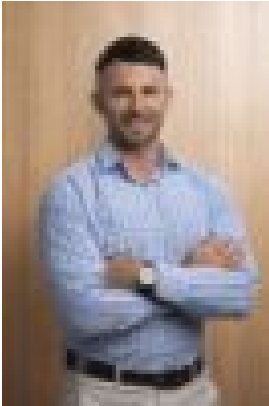
Bedrooms: 3

Bathrooms: 2

Parkings: 2

Area: 180 m2

Type: House



Sean O'Neill

0424606643

\$491,250

The Porto is a functional floorplan that's been cleverly designed for a narrow(er) lot. Don't let the size fool you, this 6m wide design is a 3x2 with plenty of space for all the good stuff; entertaining and relaxing. At the front of the home is the master suite with walk-in-robe and ensuite. Continue down the hallway to find the two minor bedrooms with a shared bathroom and convenient linen cupboard. At the back of the Porto is where the party happens - an open plan living/dining and kitchen that extends out to a courtyard. With the laundry conveniently tucked behind the kitchen, you can shut the door and fold the clothes later. *Images depicted on this site are for illustration purposes only. Facades and other images of homes and land estates may include optional upgrades, additional fixtures, finishes and home or estate features that are not included in the base price of the home or land package such as landscaping, feature tiling, decking, furnishing, feature lighting, pools, etc. Land estate pricing and plans are subject to developer guidelines and may vary at any time.