

**61/69-73 Elizabeth Drive, Liverpool, NSW 2170**



**Apartment For Rent**

Tuesday, 9 April 2024

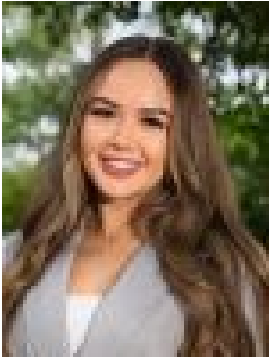
61/69-73 Elizabeth Drive, Liverpool, NSW 2170

**Bedrooms: 1**

**Bathrooms: 1**

**Parkings: 1**

**Type: Apartment**



Rachelle Fenwick  
0432790090



Eevet Arabo  
0402100814

**\$480 pw**

This elevated first floor apartment assures ultimate ease of living with sleek contemporary interiors and a convenient central address. It's placed footsteps to Liverpool Westfield, Liverpool Plaza and Western Sydney University. - Open plan layout combines lounge and dining spaces- Wall-to-wall sliding glass door maximise light, outdoor flow- Good sized covered balcony poised to enjoy morning sunlight- Kitchen features stone benchtops, dishwasher and gas cooking- Queen sized bedroom fitted with built in robe, balcony access- Spacious bathroom tiled floor-to-ceiling plus internal laundry- Secure intercom entry and lift access, secured car space- Walk to the recently redeveloped Apex Park and Station- Cafes and convenience stores below, easy link to M5 motorway