

# 61 Webber Circuit, Bardia, NSW 2565

## Sold Duplex/Semi-detached

Tuesday, 15 August 2023



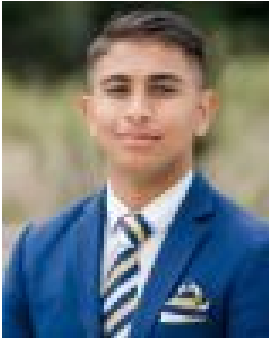
61 Webber Circuit, Bardia, NSW 2565

Bedrooms: 3

Bathrooms: 2

Parkings: 1

Type: Duplex/Semi-detached



Suprem Lamsal

**\$855,000**

Welcome to the Meadows where you are surrounded by everything you need. Boasting one of the most accessible locations in Sydney. The Meadows is well situated at the junction of the M5 and M7 motorways and is only a short 4-minute drive to the Edmondson Park train station and Ed Square shopping centre. This wonderful property comes with 3 bedrooms, main bedroom features walk-in robe and en-suite, a bathroom with a separate bathtub and shower, separate laundry, a beautiful kitchen with ample storage throughout and an alfresco looking out to a private grass backyard. Features Include: Open Plan Living Single lock up garage Solar Tiled lounge and dining areas Ducted Air conditioning Outdoor natural gas output for a BBQ Internal access to the garage Additional downstairs toilet Fully enclosed private backyard Residents can also enjoy security services, a community swimming pool, Community Hall and walking and cycling tracks within the estate Proximities: 4-minute drive to the Edmondson Park train station 4-minute drive to the Ed Square Shopping Centre 4-minute drive to Bardia Public School If you are Interested in this amazing property please contact: Murari Lamsal: 0433 755 012 Paul McKeown: 0417 691 780 Suprem Lamsal: 0426 577 272 Disclaimer: The information presented has been furnished from sources we deem to be reliable. We have not verified whether the information is accurate and do not accept any responsibility to any person and do no more than pass it on. All interested parties should rely on their own enquiries to determine the accuracy of this information.