

**610/2 Kingfisher St, Lidcombe, NSW 2141**

**Sold Apartment**

Tuesday, 5 March 2024



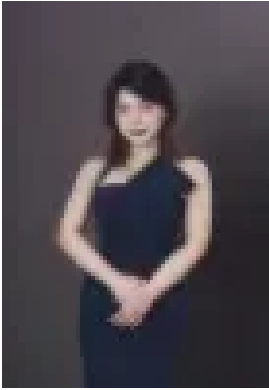
610/2 Kingfisher St, Lidcombe, NSW 2141

**Bedrooms: 2**

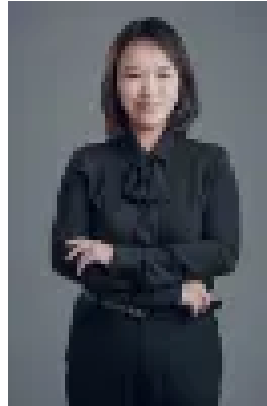
**Bathrooms: 2**

**Parkings: 1**

**Type: Apartment**



Amy Chen  
0432245767



Robyn (Lingyun) Bao  
0449078721

## Contact agent

Placed in a prime position, enjoying the benefits of being close to Sydney Olympic Park, this designed apartment provides a good entertainment area for outdoor living area and family activities. This striking luxury home showcases high-end finishes. Perfect choice for the first-home buyer, smart investors, and the dynamic urban dweller. In close proximity of a vast selection of local schools, parks and public spaces. Immerse yourself in a community that radiates with an abundance of parklands and trails, sporting facilities, cafes and shops. With more outstanding features than listed here, an inspection is essential! Key features: \* Timber-style engineered flooring flows seamlessly onto unique curvaceous balconies. \* Frameless shower screens and full-height feature walls \* Landscaped and water-featured, the two-story high lobby \* Latest European appliances and integrated cabinetry \* Dedicated media desks and shelving in the living room \* Premium fixtures and fittings extend to the laundry. \* Full-height windows and high ceilings in living areas Don't miss out, contact us for more information and inspection!