

**612/17 Chisholm Street, Wollri Creek, NSW 2205**

**Apartment For Rent**

Monday, 13 May 2024



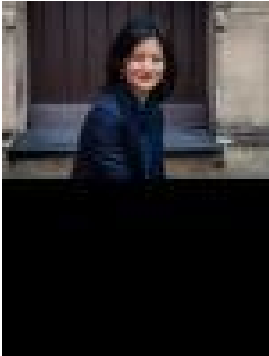
612/17 Chisholm Street, Wollri Creek, NSW 2205

**Bedrooms: 2**

**Bathrooms: 2**

**Parkings: 1**

**Type: Apartment**



Jessica Pung



Chris Paraskevopoulos  
0498158929

## **\$1,000 per week**

Positioned in the lively retail precinct and piazza-style Village square a vibrant community, Discovery Point residents enjoying it all with designer contemporary living apartment, offering the convenience of the village square with its alfresco cafés, restaurants, specialty shops and adjacent to Woolworth and Aldi supermarket, within 100 metre walk to train station, less than 10 km to City and over 3 hectares of parks and gardens, cycling pathways and plenty more to offer.

- Spacious open plan designer apartment
- Extensive floor to ceiling windows with views
- Quality stainless steel appliances including gas cooktop and dishwasher and fitted microwave
- Modern premium reconstituted stone bench top with stone splash-back kitchen
- Train Station at your doorstep
- Easy access to village shops, cafés and restaurants, supermarket (Woolworth, Aldi, Asian Supermarket)
- Access to 4 pools and gyms within Discovery Point
- Podium landscape garden for unwind
- Entertainer's BBQ area and Theatre room