

62 Fennell Crescent, Wattle Grove, WA 6107

House For Rent

Friday, 17 May 2024



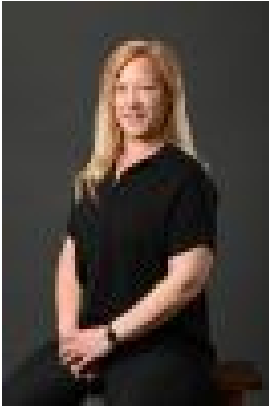
62 Fennell Crescent, Wattle Grove, WA 6107

Bedrooms: 4

Bathrooms: 2

Parkings: 2

Type: House



Kirsty Hodgkinson
0429159668



Chelsea Burrows
0429115919

\$690 per week

Positioned in one of the suburbs most illustrious locations, surrounded by gorgeous homes and walking distance from renowned parks, Wattle Grove Primary school, brand new shopping facilities and public transport. This beautifully appointed and intelligently designed family home offers a host of entertaining areas have a bright and cheery welcome home feel. With a spacious living area, a fully fenced backyard, and a carport with space for 2 vehicles, this property is perfect for families or those who love to entertain. Features: • Beautiful large master bedroom with full-length walk in robe and great convenient ensuite. • Front living room for extra living room space. • Double carport with shoppers door access. As you walk in from the shoppers access door you are greeted with an inviting open plan kitchen/dining/family areas. • Reverse cycle ducted evaporative cooling and a gas bayonet is available. • Four generously proportioned bedrooms with two modern bathrooms. All kids bedrooms have built in robes or walk in robes • Walk in spacious linen cupboard. Modern laundry, separate toilet. • Gabled patio area for great entertaining. Beautiful easy care reticulated gardens. Garden shed. Side gate. • Enclosed back yard. Enjoy having a glorious front and back yard. You will absolutely love living in this impressive location! Property is available 22nd May 2024. Please register online for home open times and updates.