

**62 Fitzroy Street, Goulburn, NSW 2580**

**Raine&Horne.**

**House For Sale**

Thursday, 13 June 2024

62 Fitzroy Street, Goulburn, NSW 2580

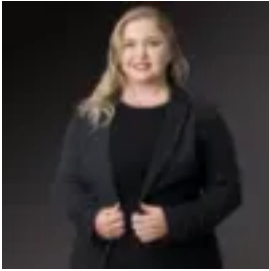
**Bedrooms: 3**

**Bathrooms: 1**

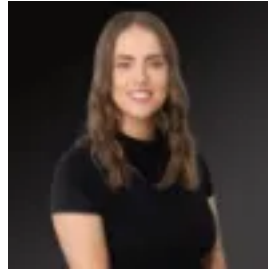
**Parkings: 1**

**Area: 893 m2**

**Type: House**



Peta Beadman  
0424164676



Stephanie OBrien  
0248219088

**\$639,000**

Welcome to this lovely 3-bedroom home, ideally situated at the front of a generous 893 sqm block, offering both opportunity for future growth\* and space. Designed with modern comforts in mind, the property features double glazing, wider door frames, and accessibility features throughout, ensuring a comfortable living experience for everyone. The home includes a single lock-up garage with an electric roller door and internal access for added convenience. Inside, the spacious bedrooms come with built-in robes, providing ample storage space for your needs. The updated kitchen is a chef's delight, equipped with a SOLT dishwasher, gas cooktop, Kleenmaid electric oven, and a pantry, perfect for culinary enthusiasts. The open plan living and dining area is designed for modern living, offering a seamless flow and plenty of natural light. Beautiful finishes throughout the home include dark hybrid flooring, stylish skirting, and day & night roller blinds on most windows, adding a touch of elegance to every room. The flexible and functional floorplan allows the second bedroom to open up into an additional living space to suit your needs, providing versatility for your lifestyle. Enhanced functionality is evident throughout the home, with Mitsubishi air conditioning ensuring year-round comfort, and a well-equipped laundry featuring an additional water closet, two large cabinets, and a broom closet for added convenience. This home combines style, comfort, and functionality in one perfect package. Don't miss the opportunity to make 62 Fitzroy St your new home!

**Key Features:**

- A lovely 3 bedroom home ideally situated at the front of an 893sqm block
- Double glazing, Mitsubishi airconditioning wider door frames, and accessibility features throughout
- Single lock up garage with electric roller door and internal access
- Large bedrooms with built in robes
- Updated kitchen with SOLT dishwasher, gas cooktop, Kleenmaid electric oven and pantry
- Open plan living and dining with lovely
- Beautiful finishings including dark hybrid flooring, stylish skirting, day & night roller blinds on most windows
- Flexible & functional floorplan with second bedroom able to open up into additional living space to suit your needs
- Laundry with additional water closet and two large cabinets, and broom closet\*

\* Renovations, extensions and new buildings are all subject to council approval.