

62 Landscape Bvd, Hampton Park, Vic 3976

Townhouse For Rent

Friday, 3 May 2024

62 Landscape Bvd, Hampton Park, Vic 3976

Bedrooms: 2

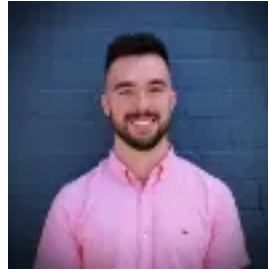
Bathrooms: 1

Parkings: 1

Type: Townhouse



Renee Whitehouse



Mitch Talbot
0403978350

\$490 per week

Nestled in a serene neighbourhood, this modern 2-story rental property offers the perfect blend of comfort and convenience. Key Features: 2 carpeted bedrooms with built in robes (main with split system, and 2nd with electric panel heater) Central bathroom with separate bath & shower Large modern kitchen and open plan lounge room (with split system), opening onto an entertainer's sized balcony 2nd living area providing ample room for relaxation and entertainment Powder room Laundry 1 lock up garage Located in the heart of Hampton Park, this property boasts proximity to essential amenities, including schools, parks, shopping centres, and transport links, ensuring a lifestyle of utmost convenience. With its modern design and thoughtful layout, 62 Landscape Drive is more than just a rental property—it's a place to call home. Don't miss out on this opportunity to experience comfortable living in a vibrant community.