

62 Mount Whitsunday Drive, Airlie Beach, Qld 4802



Sold Residential Land

Wednesday, 1 May 2024

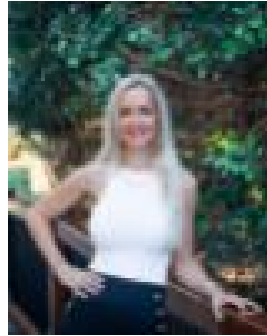
62 Mount Whitsunday Drive, Airlie Beach, Qld 4802

Area: 3770 m2

Type: Residential Land



Stephanie McWhirter
0749488500



Clarice Davis
0749488500

\$585,000

Build your dream here... Huge price reduction! Elevate your lifestyle at this exceptional 3,770sqm sea-view block in the prestigious Mount Whitsunday Estate, Airlie Beach. Overlooking the marina and Whitsunday islands, this gently sloping parcel within a gated community offers unparalleled tranquillity and potential. Nestled among million-plus dollar homes, privacy is paramount with a vegetation covenant ensuring an intimate oasis. Embrace the coveted coastal living as you envision your dream home, with room to complete a pool or build a large shed on this expansive canvas. The sought-after location combines lush rainforest surroundings and refreshing breezes, creating an idyllic ambiance. Revel in the privilege of a private tennis court within the estate. Just 1km away, Airlie Beach's main street, lagoon, shops, cafes, and restaurants await, perfectly balancing convenience with serenity. Seize the opportunity to craft your own coastal haven or seize the opportunity to build the grand house that was originally designed for this block.