

63/68 Hardwick Crescent, Holt, ACT 2615



Apartment For Sale

Friday, 14 June 2024

63/68 Hardwick Crescent, Holt, ACT 2615

Bedrooms: 2

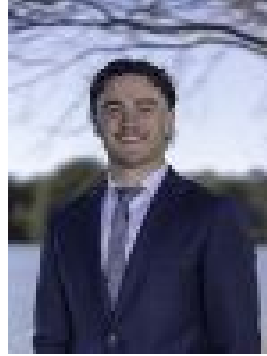
Bathrooms: 2

Parkings: 2

Type: Apartment



Nathan Wood
0432228630



Darcey Bush
0455958645

\$485,000+

Set in the well known Parkview Apartment complex, is this first floor two bedroom apartment. Welcomed by a spacious open plan living area and modern kitchen filled with an abundance of natural light. Master bedroom includes an ensuite and the second bedroom is serviced by the main bathroom with european style laundry. Complete with a generous north facing covered corner balcony that overlooks the complex gardens, offering a great outdoor living area and the perfect place to entertain. Whether you're looking to downsize, secure your first home or add to your investment portfolio this property is one you will want to add to your list. Complete convenience is obvious, with the best local amenities within a short walk of the complex. Including the popular Kippax Fair shopping centre, restaurants, cafes and public transport that will offer you the option to head into Belconnen Town Centre or Canberra City itself. - Positioned in the Parkview Apartment complex - Freshly painted throughout - Freshly installed carpet throughout - Convenient location with amenities within walking distance - Generous two bedroom floorplan with corner position - Modern kitchen with good storage and breakfast bar - Both bedrooms include robes, master bedroom with ensuite - Main bathroom with european laundry - Open plan living / dining space is flooded with natural light - Generous north facing covered corner balcony - Split system installed in the living area - Two allocated car spaces in the basement carpark - Both stair and lift access within the complex - Body Corporate, including sinking fund Approximately \$1,490.32 per quarter Disclaimer: All information regarding this property is from sources we believe to be accurate, however we cannot guarantee its accuracy. Interested persons should make and rely on their own enquiries in relation to inclusions, figures, measurements, dimensions, layout, furniture and descriptions.