

**63 Lansdowne Crescent, Oatley, NSW 2223**



**Sold House**

Wednesday, 11 October 2023

63 Lansdowne Crescent, Oatley, NSW 2223

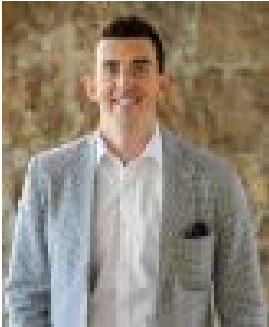
**Bedrooms: 3**

**Bathrooms: 2**

**Parkings: 3**

**Area: 691 m2**

**Type: House**



Matt Brooks  
0431054283



Fraser Glen  
0295807111

## Contact agent

Situated in one of Oatley's premier streets this beautifully presented double brick home overlooks the Georges River and is the complete family package. Bathed in natural light and offering a versatile floor plan, the indoor/outdoor flow makes this home perfect for those who love to entertain. Stylish and sophisticated, the living areas of the home have generous proportions. The main lounge features plantation shutters and a Heat & Glo fireplace, while the second living area is a highlight with polished timber flooring, fabulous natural light and direct access onto the large wraparound balcony to enjoy water glimpses. The home features three spacious bedrooms, two complete with ensuites. The kitchen is generously proportioned with stainless steel appliances and breakfast bar, as well as an abundance of cupboard and bench space. A flexible floorplan flows seamlessly outside where you have the option of the private entertaining area that overlooks the stunning swimming pool or the rear balcony with elevated views, both perfect for afternoons spent entertaining. Features include:

- Level and sunny 691sqm parcel of land in prime location.
- Double brick construction.
- Three generously-sized bedrooms, two with ensuite.
- Three modern bathrooms.
- Multiple living areas.
- Open plan kitchen with gas cooking, stainless steel appliances, breakfast bar.
- Casual dining area flowing directly off the kitchen out to entertaining area.
- Sparkling inground swimming pool.
- Covered outdoor entertaining area.
- Lock up triple garage with additional under house storage/wine cellar
- Ducted air conditioning, timber flooring & plantation shutters throughout.
- Close to schools, parks, transport and cafes.

Tucked away in a quiet and highly sought-after pocket of Oatley, this home is ready for you to move in and enjoy lazy afternoons by the pool, entertaining friends and family.