

63 Meridian Circuit, Berwick, Vic 3806

Sold House

Thursday, 29 February 2024

63 Meridian Circuit, Berwick, Vic 3806

Bedrooms: 3

Bathrooms: 2

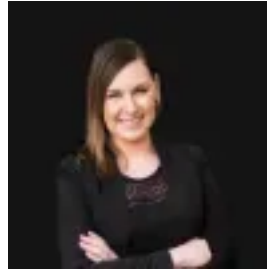
Parkings: 2

Area: 328 m2

Type: House



Oskar Forsyth
0397054888



Tara Walters
0397076000

\$740,000

Explore this single-level sanctuary in Affinity Estate, featuring three spacious bedrooms including a deluxe master with walk-in robe and ensuite. With contemporary elegance throughout, the home invites you in eagerly. The focal point is the open-plan kitchen, living, and dining area, seamlessly combining functionality and style. Step out to the outdoor space, perfect for relaxation and entertaining amidst landscaped surroundings and a low-maintenance backyard. Additional features include a remote-controlled double garage, ducted heating, and evaporative cooling, ensuring modern comfort. Furthermore, the property is currently leased with a lovely and reliable couple, making it a great investment opportunity if you aren't looking to move in yourself. Enjoy amenities like the in-ground pool, tennis court, and communal BBQ area in Affinity Estate. Close to Eden Rise Shopping Village, M1 Freeway, Casey Hospital, public transport, schools, parks, and playgrounds, convenience is key. Whether downsizing, investing, or starting your homeownership journey, this residence combines luxury with easy living.