

63 Park Avenue, Aylmerton, NSW 2575



Sold House

Saturday, 2 September 2023

63 Park Avenue, Aylmerton, NSW 2575

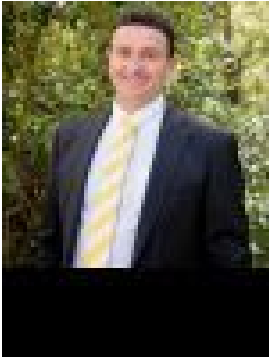
Bedrooms: 3

Bathrooms: 1

Parkings: 1

Area: 752 m2

Type: House



Rick Mooney



Andy Kirk
0411300366

Contact agent

Welcome to 63 Park Avenue Aylmerton! This charming home offers a comfortable and convenient lifestyle and perfect for small families, first home buyers, investors, or those looking for a cozy retreat. Situated on a generous 752.5 sqm block, this house boasts ample space both inside and out. The well-maintained gardens both front and rear provide a peaceful and inviting atmosphere, perfect for relaxing or entertaining guests. The interior of the house offers a warm and inviting ambiance, with plenty of natural light flowing through the large picture windows. The spacious living areas provide plenty of room for relaxation and entertainment, while the functional and newly renovated kitchen is equipped with modern appliances and ample storage space. This property offers three well-proportioned bedrooms and the newly renovated bathroom is well-appointed and includes a separate bathtub to shower. Ensuring winter warmth and summer comfort the property is fitted with a fully functioning open fireplace and split system air conditioning. Step outside onto an oversized sunlit deck/entertaining area with both covered and uncovered areas, perfect for outdoor dining, relaxing and entertaining guests. This property offers a single car garage providing secure parking and additional storage options as well as ample driveway parking. Property highlights:

- Located on a tranquil and peaceful street
- Three spacious bedrooms freshly painted throughout
- Recently renovated kitchen with modern appliances and ample storage space
- Recently updated bathroom with separate bathtub to shower
- Abundant natural light throughout the entire home
- Fully functioning open fireplace and fitted connectors for LPG
- Reverse cycle air conditioning
- Fitted with 6.6kw solar electricity
- Generous sized outdoor entertaining deck area with covered and uncovered areas with bush outlook

Located in the quiet suburb of Aylmerton, this property offers a peaceful and family-friendly environment. Enjoy the convenience of nearby amenities, including schools, shops, and parks, all within easy reach. Don't miss out on this fantastic opportunity to secure your dream home.