

64 Benwerrin Drive, Burwood East, Vic 3151



House For Sale

Monday, 22 January 2024

64 Benwerrin Drive, Burwood East, Vic 3151

Bedrooms: 3

Bathrooms: 1

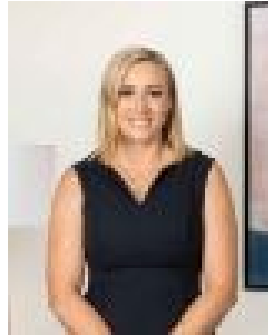
Parkings: 2

Area: 529 m2

Type: House



Rohan Calder
0422256948



Tess Quinlan
0450922959

\$950,000 - \$1,045,000

Tightly held for its proximity to quality schools, public transport, local parks and Burwood One Shopping Centre, this classic home occupying approx. 534sqm of near-level land offers an incredible opportunity for families looking to move into this wonderful neighbourhood. Featuring a practical floorplan with dual living areas, up to 3 bedrooms (depending on the configuration) and a central kitchen and bathroom, the property would suit those seeking to undertake a modern renovation or build their dream home (STCA). Additional features include polished timber floors, split system air conditioning, outdoor awnings, an established backyard with a covered patio and garden shed, a lock up garage and secure off-street parking behind gates. The rewarding location adds to the allure, within the catchment zone for Burwood East Primary School and Mount Waverley Secondary College, with seamless access to bus and tram services, Benwerrin Kindergarten, Burwood Heights Shopping Centre, Mount Scopus College, PLC, Deakin University, Box Hill Golf Club and The Glen Shopping Centre. Noel Jones Real Estate has taken every precaution to ensure the information contained herein is true and accurate, however accept no responsibility and disclaim all liability in respect to any errors, omissions, inaccuracies, or misstatements that may occur. Prospective purchasers should make their own enquiries to verify the information contained herein.