

64 Golding Street, Beverley, SA 5009



House For Sale

Friday, 19 January 2024

64 Golding Street, Beverley, SA 5009

Bedrooms: 3

Bathrooms: 1

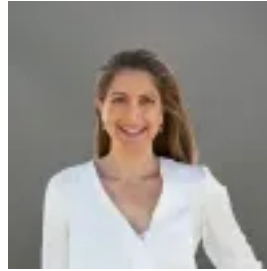
Parkings: 2

Area: 695 m2

Type: House



Frank Azzollini
0883473666



Josie Auricchio
0883473666

Auction | Sat 10th Feb at 12pm On Site (USP)

Auction Location: On Site Nestled comfortably between the city's pulse and Adelaide's finest beaches, this charming 1950s-built residence at 64 Golding Street, Beverley, offers a unique living experience for those drawn to the balance of urban convenience and seaside tranquillity-you've struck GOLD! The home is established on an expansive block of approximately 695 square meters, providing a generous canvas for those who wish to expand or tailor the spacious surroundings to their individual lifestyle needs. A testament to the era of its construction, this solid family home has been meticulously maintained, retaining its structural integrity while presenting an excellent opportunity for the new owners to modernize and personalize. Key attributes of the property include:- 3 well-proportioned bedrooms, main with split system air conditioning and ceiling fan- Bedroom 2 with ceiling fan and built-in-robe- Tidy bathroom, vanity, bathtub and separate shower. On trend terrazzo floor - Functional family kitchen, gas stove, meals area- Spacious lounge, decorative ceiling, feature mantle with new gas heater- Adjacent air conditioned formal dining room- Lovely polished floors- Verandah spanning the width of the property- Private, secure yard for kids to play, there's even room for a veggie patch. Working Pizza oven-Garage/workshop This home represents a rare chance to secure a property that not only stands as a reflection of a bygone era's craftsmanship but also as a canvas for contemporary innovation. It invites you to envision a living space tailored precisely to your desires, all while enjoying the benefits of its exceptional location, only minutes to prominent schools and Armada Shopping Centre. The doors of 64 Golding Street, Beverley, are open, awaiting a discerning owner ready to embrace its potential and craft their future amidst the best of both worlds. Disclaimer: Any prospective purchaser should not rely solely on 3rd party information providers to confirm the details of this property or land and are advised to enquire directly with the agent in order to review the certificate of title and local government details provided with the completed Form 1 vendor statement. All land sizes quoted are an approximation only and at the purchaser's discretion to confirm. All information contained herein is gathered from sources we consider to be reliable. However, we cannot guarantee or give any warranty about the information provided. Interested parties must solely rely on their own enquiries. RLA 175322