

# 64 Honeyeater Drive, Burleigh Waters, Qld 4220

## House For Sale

Tuesday, 21 May 2024

64 Honeyeater Drive, Burleigh Waters, Qld 4220

**Bedrooms: 5**

**Bathrooms: 3**

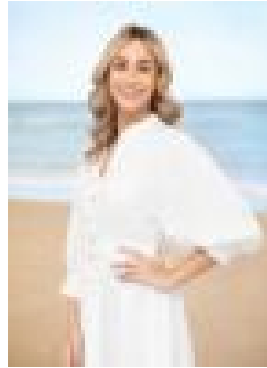
**Parkings: 2**

**Area: 863 m2**

**Type: House**



Adam Van Leeuwen  
0481271806



Jemma Psaila  
0433929682

## Contact Agent

Step into this exquisite, immaculately renovated waterfront haven situated in the coveted coastal enclave of Burleigh Waters. Perfectly positioned to embrace the sprawling water views, this single-story residence graces an expansive 863m<sup>2</sup> parcel of land. As you step inside, soaring ceilings, panoramic water views stretching to the Burleigh skyline and Gold Coast Hinterland, and the seamless flow between the living, dining, and kitchen areas evoke immediate awe. This home not only captivates upon arrival but also leaves a lasting impression with its breathtaking vistas. The property boasts a sumptuous master bedroom with breathtaking water views, luxurious walk-in robe and spacious ensuite. Three generously sized bedrooms, two living areas, a striking family bathroom and additional powder room combine to deliver a stylish, functional and truly spectacular family abode. At the heart of the home lies the open plan living, dining, and kitchen area, suffused with natural light, invigorating sea breezes, and luxurious finishes throughout. Completing the property is a self-contained studio overlooking the sparkling swimming pool, offering a spacious bedroom and ensuite bathroom, an ideal retreat for accommodating extended family members or independent teenagers. Property Features:

- 5 spacious bedrooms, including a master with water views, ensuite, and walk-in robe.
- 3 bathrooms plus a powder room
- 2 separate lounge areas
- Panoramic water vistas stretching to Burleigh Skyline & Gold Coast Hinterland
- High ceilings (4.4m) in the lounge, flooded with natural light.
- Expansive kitchen with Miele Appliances, integrated dishwasher and Fisher & Paykel French door fridge.
- Inviting family-sized pool
- Multiple alfresco spaces for year-round entertaining
- Generous 863m<sup>2</sup> elevated lot
- Sandy Beach
- Double carport with secure storage
- Low-maintenance landscaping with front and rear grassed area
- Ducted and zoned air conditioning plus ceiling fans throughout

Whether you are seeking a dual living arrangement, a home office space, or a lucrative investment opportunity, this expansive family home offers boundless potential. With its inviting facade and luxurious lifestyle amenities, this property provides a sanctuary of relaxation and epitomizes family living at its most refined. Discover the convenience of living just moments away from Miami One Shopping Centre, local schools, and the pristine shores of Burleigh Beach. This location sets the standard for exceptional coastal living. Reach out to Jemma & Adam today to arrange your viewing. Disclaimer: Whilst every effort has been made to ensure the accuracy of these particulars, no warranty is given by the vendor or the agent as to their accuracy. Interested parties should not rely on these particulars as representations of fact but must instead satisfy themselves by inspection or otherwise.